

À des fins de recherche uniquement

Anticorps Monoclonal anti-IgG2a isotype control



Numéro de catalogue: CR-66360-2

Informations de base

Numéro de catalogue:

CR-66360-2

Taille:

100ug, Concentration: 0.2 mg/mL by
Nanodrop;

Hôte:

Mouse

Isotype:

IgG2a

Numéro d'acquisition GenBank:

Identification du gène (NCBI):

Nom complet:

Méthode de purification:

Purification par protéine A

CloneNo.:

11A1B2

Excitation/Emission maxima
wavelengths:

592 nm / 611 nm

Applications

Applications testées:

FC

Spécificité de l'espèce:

Megathura crenulata

Informations générales

This antibody is used as the isotype control of mouse IgG2a. It can be used as the isotype control in Flow Cytometry, Immuno-Precipitation and other experiments. The immunogen of this antibody is Keyhole Limpet Hemocyanin (KLH).

Stockage

Stockage:

Store at 2-8°C. Avoid exposure to light. Stable for one year after shipment.

Tampon de stockage:

PBS with 0.09% sodium azide and 0.5% BSA.

***** Les 20ul contiennent 0,1% de BSA.**

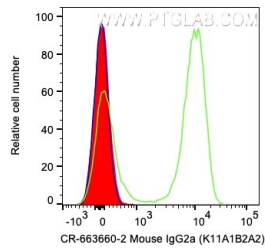
For technical support and original validation data for this product please contact:

T: 1 (888) 4PTGLAB (1-888-478-4522) (toll free
in USA), or 1(312) 455-8498 (outside USA)

E: proteintech@ptglab.com
W: ptglab.com

This product is exclusively available under Proteintech Group brand and is not available to purchase from any other manufacturer.

Données de validation sélectionnées



1×10^6 human PBMCs were surface stained with 0.2 μ g Cardinal Red™ Anti-Mouse IgG2a isotype control (CR-66360-2, Clone:11A1B2) (red), Cardinal Red™ Anti-Human CD3 (green), or unstained (blue). Cells were not fixed. Lymphocytes were gated.