

À des fins de recherche uniquement

Anticorps Monoclonal anti-CD163

Numéro de catalogue: CR-65169



Informations de base

Numéro de catalogue:
CR-65169

Taille:
100 tests, 5 ul/test

Hôte:
Mouse

Isotype:
IgG1, kappa

Numéro d'acquisition GenBank:
BC051281

Identification du gène (NCBI):
9332

Nom complet:
CD163 molecule

MW calculé
1156 aa, 125 kDa

Méthode de purification:

Purifié par chromatographie d'affinité
par protéine A

CloneNo.:
GHI/61

Excitation/Emission maxima
wavelengths:
592 nm / 611 nm

Applications

Applications testées:
FC

Spécificité de l'espèce:
Humain

Informations générales

CD163, also known as M130, is a membrane glycoprotein which belongs to the scavenger receptor superfamily (PMID: 8370408). It is an acute phase-regulated and signal-inducing macrophage protein expressed exclusively in monocytes and tissue macrophages (PMID: 11196644). CD163 mediates endocytosis of haptoglobin-haemoglobin complexes (PMID: 11196644). The uptake of haptoglobin by macrophages contributes to the recycling of iron and also to the inflammatory response (PMID: 22900885). Soluble CD163 (sCD163), as a result of ectodomain shedding during inflammatory activation of macrophages, circulates in blood and has been suggested as a plasma/serum marker for macrophage activity (PMID: 12570164).

Stockage

Stockage:

Store at 2-8°C. Avoid exposure to light. Stable for one year after shipment.

Tampon de stockage:

PBS with 0.09% sodium azide and 0.5% BSA.

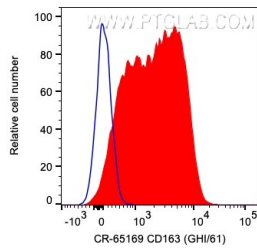
For technical support and original validation data for this product please contact:

T: 1 (888) 4PTGLAB (1-888-478-4522) (toll free
in USA), or 1(312) 455-8498 (outside USA)

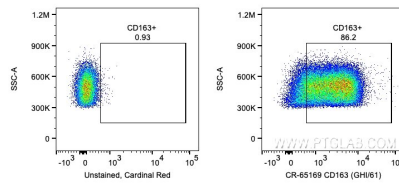
E: proteintech@ptglab.com
W: ptglab.com

This product is exclusively available under Proteintech Group brand and is not available to purchase from any other manufacturer.

Données de validation sélectionnées



1X10⁶ human PBMCs were surface stained with 5 ul Cardinal Red™ Anti-Human CD163 (CR-65169, Clone:GHI/61) (red) or unstained. Cells were not fixed. Monocytes and granulocytes were gated.



1X10⁶ human PBMCs were surface stained with 5 ul Cardinal Red™ Anti-Human CD163 (CR-65169, Clone:GHI/61) or unstained. Cells were not fixed. Monocytes and granulocytes were gated.