

À des fins de recherche uniquement

Anticorps Monoclonal anti-Albumin

Numéro de catalogue: CL750-66051



Informations de base

Numéro de catalogue: CL750-66051	Numéro d'acquisition GenBank: BC034023	Méthode de purification: Purification par protéine G
Taille: 100ul , Concentration: 1000 µg/ml by Nanodrop;	Identification du gène (NCBI): 213	CloneNo.: 4A1C11
Hôte: Mouse	Nom complet: albumin	Dilutions recommandées: WB 1:1000-1:8000
Isotype: IgG1	MW calculé 609 aa, 69 kDa	Excitation/Emission maxima wavelengths: 755 nm / 780 nm
Immunogen Catalog Number: AG9885	MW observés: 66 kDa	

Applications

Applications testées: WB	Contrôles positifs: WB : cellules HepG2, plasma humain
Spécificité de l'espèce: Humain, porc, rat	

Informations générales

Albumin is the most abundant protein in blood plasma. Alterations of level of serum albumin are linked to variety of diseases. Albumin is expressed exclusively by well-differentiated hepatocytes, thus anti-albumin has been used to mark hepatocytes. (21388516, 23832071) In addition, glycosylated serum albumin is also a potential diabetes biomarker.

Stockage

Stockage:
Stocker à -20 °C. Éviter toute exposition à la lumière. Stable pendant un an après l'expédition.
Tampon de stockage:
PBS avec glycérol à 50 %, Proclin300 à 0,05 % et BSA à 0,5 %, pH 7,3.
L'aliquotage n'est pas nécessaire pour le stockage à -20C

***** Les 20ul contiennent 0,1% de BSA.**

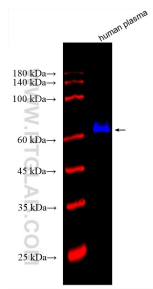
For technical support and original validation data for this product please contact:

T: 1 (888) 4PTGLAB (1-888-478-4522) (toll free
in USA), or 1(312) 455-8498 (outside USA)

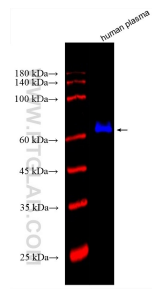
E: proteintech@ptglab.com
W: ptglab.com

This product is exclusively available under Proteintech Group brand and is not available to purchase from any other manufacturer.

Données de validation sélectionnées



Various lysates were subjected to SDS PAGE followed by western blot with CL750-66051 (Albumin antibody) at dilution of 1:4000 incubated at room temperature for 1.5 hours.



Various lysates were subjected to SDS PAGE followed by western blot with CL750-66051 (Albumin antibody) at dilution of 1:4000 incubated at room temperature for 1.5 hours.