

À des fins de recherche uniquement

# Anticorps Monoclonal anti-IL-1 $\beta$

Numéro de catalogue: CL750-65276



## Informations de base

Numéro de catalogue:  
CL750-65276

Taille:  
100 $\mu$ g, 0.2 mg/mL

Hôte:  
Mouse

Isotype:  
IgG1

Immunogen Catalog Number:  
HZ-1164

Numéro d'acquisition GenBank:  
BC008678

Identification du gène (NCBI):  
3553

Nom complet:  
interleukin 1, beta

MW calculé  
269 aa, 31 kDa

Méthode de purification:  
Purification par affinité

CloneNo.:  
2A7C6

Excitation/Emission maxima  
wavelengths:  
755 nm / 780 nm

## Applications

Applications testées:  
FC

Spécificité de l'espèce:  
Humain

## Informations générales

Interleukin-1 is a pro-inflammatory cytokine with multiple biological effects. The IL-1 gene family encodes three proteins: IL-1 $\alpha$ , IL-1 $\beta$  and their naturally occurring inhibitor IL-1RN. Interleukin 1 $\beta$  (IL-1 $\beta$ ), mainly produced by blood monocytes and tissue macrophages, has been implicated in mediating both acute and chronic inflammation. IL-1 $\beta$  is known to be involved in a variety of cellular activities, including cell proliferation, differentiation and apoptosis. IL-1 $\beta$  is emerging as a key mediator of carcinogenesis that characterizes host-environment interactions. (PMID: 8630372; 12401481; 23704929; 24618930)

## Stockage

Stockage:  
Store at 2-8°C. Avoid exposure to light. Stable for one year after shipment.  
Tampon de stockage:  
PBS with 0.09% sodium azide and 0.5% BSA.

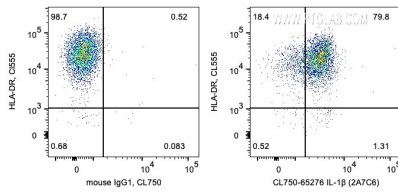
For technical support and original validation data for this product please contact:

T: 1 (888) 4PTGLAB (1-888-478-4522) (toll free  
in USA), or 1(312) 455-8498 (outside USA)

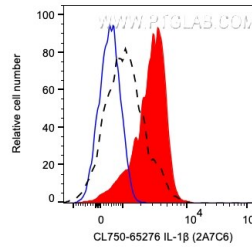
E: [proteintech@ptglab.com](mailto:proteintech@ptglab.com)  
W: [ptglab.com](http://ptglab.com)

This product is exclusively available under Proteintech Group brand and is not available to purchase from any other manufacturer.

## Données de validation sélectionnées



1X10<sup>6</sup> LPS and Brefeldin A treated human PBMCs were surface stained with CoraLite® Plus 555 Anti-Human HLA-DR then intracellularly stained with 0.2 ug CoraLite® Plus 750 Anti-Human IL-1β (CL750-65276, Clone:2A7C6) or Mouse IgG1 Isotype Control. Cells were fixed and permeabilized with Transcription Factor Staining Buffer Kit (PF00011). Monocytes were gated.



1X10<sup>6</sup> LPS and Brefeldin A treated human PBMCs were intracellularly stained with 0.2 ug CoraLite® Plus 750 Anti-Human IL-1β (CL750-65276, Clone:2A7C6) (red) or Mouse IgG1 Isotype Control (blue), or unactivated and Brefeldin A treated human PBMCs were intracellularly stained with 0.2 ug CoraLite® Plus 750 Anti-Human IL-1β (CL750-65276, Clone:2A7C6) (black, dashed line). Cells were fixed and permeabilized with Transcription Factor Staining Buffer Kit (PF00011).

