

À des fins de recherche uniquement

Anticorps Monoclonal anti-KLRG1

Numéro de catalogue: **CL750-65084**



Informations de base

Numéro de catalogue:

CL750-65084

Taille:

100ug, 0.5 mg/ml

Hôte:

Golden Syrian Hamster

Isotype:

IgG

Numéro d'acquisition GenBank:

BC101953

Identification du gène (NCBI):

50928

Nom complet:

killer cell lectin-like receptor
subfamily G, member 1

Méthode de purification:

Purification par affinité

CloneNo.:

2F1

Excitation/Emission maxima
wavelengths:

755 nm / 780 nm

Applications

Applications testées:

FC

Spécificité de l'espèce:

souris

Informations générales

KLRG1 (killer cell lectin-like receptor subfamily G, member 1) is a C-type lectin inhibitory receptor that contains an immunoreceptor tyrosine-based inhibitory motif (ITIM) in its cytoplasmic domain. KLRG1 is expressed by subsets of NK and T cells, existing both as a monomer and as a disulfide-linked homodimer (PMID: 10741410; 19604491). It is considered to be a cell differentiation marker for NK and T cells and is strongly induced by viral and other infections (PMID: 20373518). Through interactions with members of the cadherin family, KLRG1 plays an inhibitory role on NK- and T-cell function (PMID: 19009530; 20373518).

Stockage

Stockage:

Store at 2-8°C. Avoid exposure to light. Stable for one year after shipment.

Tampon de stockage:

PBS with 0.09% sodium azide.

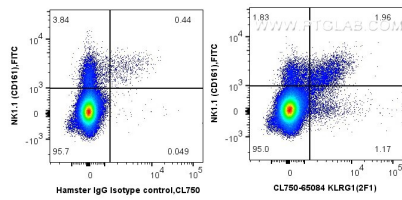
For technical support and original validation data for this product please contact:

T: 1 (888) 4PTGLAB (1-888-478-4522) (toll free
in USA), or 1(312) 455-8498 (outside USA)

E: proteintech@ptglab.com
W: ptglab.com

This product is exclusively available under Proteintech Group brand and is not available to purchase from any other manufacturer.

Données de validation sélectionnées



1X10⁶ mouse splenocytes were surface co-stained with FITC Anti-Mouse NK1.1 (CD161) and 0.5 μ g CoraLite® Plus 750 Anti-Mouse KLRG1 (CL750-65084, Clone: 2F1) or 0.5 μ g Isotype Control. Cells were not fixed.