

À des fins de recherche uniquement

Anticorps Monoclonal anti-CD16/32

Numéro de catalogue: **CL750-65057**



Informations de base

Numéro de catalogue:

CL750-65057

Taille:

100ug, 0.5 mg/ml

Hôte:

Rat

Isotype:

IgG2a, lambda

Numéro d'acquisition GenBank:

BC038070

Identification du gène (NCBI):

14130

Nom complet:

Fc receptor, IgG, low affinity IIb

Méthode de purification:

Purification par affinité

CloneNo.:

93

Excitation/Emission maxima
wavelengths:

755 nm / 780 nm

Applications

Applications testées:

FC

Spécificité de l'espèce:

souris

Informations générales

CD16 (FcγRIII) is a 50-70 kDa low affinity Fc receptor found on the surface of natural killer cells, neutrophil polymorphonuclear leukocytes, monocytes and macrophages. CD16 mediates antibody-dependent cellular cytotoxicity (ADCC) and other antibody-dependent responses, such as phagocytosis. CD32 (FcγRII) is a 40 kD transmembrane glycoprotein that binds to the Fc region of IgG with low affinity. CD32 is present on phagocytic cells such as macrophages and neutrophils, and is involved in the process of phagocytosis and clearing of immune complexes. Rat anti mouse CD16/32 antibody, clone 93 is specific to the common epitope of CD16 and CD32. It can be used for blocking non-specific binding of immunoglobulins to the Fc receptors.

Stockage

Stockage:

Store at 2-8°C. Avoid exposure to light. Stable for one year after shipment.

Tampon de stockage:

PBS with 0.09% sodium azide.

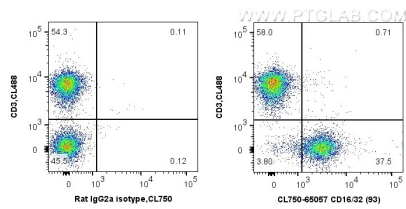
For technical support and original validation data for this product please contact:

T: 1 (888) 4PTGLAB (1-888-478-4522) (toll free
in USA), or 1(312) 455-8498 (outside USA)

E: proteintech@ptglab.com
W: ptglab.com

This product is exclusively available under Proteintech Group brand and is not available to purchase from any other manufacturer.

Données de validation sélectionnées



1X10⁶ mouse splenocytes were surface co-stained with CoraLite® Plus 488 Anti-Mouse CD3 (17A2) and 0.5 ug CoraLite® Plus 750 Anti-Mouse CD16/32 (CL750-65057, Clone:93) or 0.5 ug CoraLite® Plus 750 Rat IgG2a Isotype Control (2A3) (CL750-65209, Clone: 2A3). Cells were not fixed.