

À des fins de recherche uniquement

# Anticorps Monoclonal anti-CD1d

Numéro de catalogue: **CL647-65242**



## Informations de base

Numéro de catalogue:

CL647-65242

Taille:

100ug , 500 µg/mL

Hôte:

Rat

Isotype:

IgG2b, kappa

Numéro d'acquisition GenBank:

Identification du gène (NCBI):

12479

Nom complet:

CD1d1 antigen

Méthode de purification:

Purification par affinité

CloneNo.:

1B1

Excitation/Emission maxima  
wavelengths:

654 nm / 674 nm

## Applications

Applications testées:

FC

Spécificité de l'espèce:

souris

## Informations générales

CD1d is a member of the CD1 family of transmembrane glycoproteins, which are structurally related to the major histocompatibility complex (MHC) proteins and form heterodimers with beta-2-microglobulin. CD1d is an antigen-presenting protein that binds self and non-self glycolipids and presents them to T-cell receptors on NKT cells. When activated, NKT cells rapidly produce Th1 and Th2 cytokines.

## Stockage

Stockage:

Store at 2-8°C. Avoid exposure to light. Stable for one year after shipment.

Tampon de stockage:

PBS with 0.09% sodium azide.

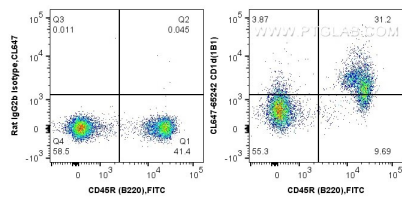
For technical support and original validation data for this product please contact:

T: 1 (888) 4PTGLAB (1-888-478-4522) (toll free  
in USA), or 1(312) 455-8498 (outside USA)

E: [proteintech@ptglab.com](mailto:proteintech@ptglab.com)  
W: [ptglab.com](http://ptglab.com)

This product is exclusively available under Proteintech Group brand and is not available to purchase from any other manufacturer.

## Données de validation sélectionnées



1X10<sup>6</sup> mouse splenocytes were surface stained with FITC Anti-Mouse CD45R (B220) (FITC-65139, Clone: RA3-6B2) and 1 ug CoraLite® Plus 647 Anti-Mouse CD1d (CL647-65242, Clone: 1B1) or CoraLite® Plus 647 conjugated rat IgG2b isotype control. Cells were not fixed.