

À des fins de recherche uniquement

Anticorps Monoclonal anti-CD206

Numéro de catalogue: CL647-65155



Informations de base

Numéro de catalogue:

CL647-65155

Taille:

100 tests, 5 µl/test

Hôte:

Mouse

Isotype:

IgG1, kappa

Numéro d'acquisition GenBank:

NM_002438

Identification du gène (NCBI):

4360

Nom complet:

mannose receptor, C type 1

MW calculé

166 kDa

Méthode de purification:

Purifié par chromatographie d'affinité par protéine A

CloneNo.:

15-2

Excitation/Emission maxima wavelengths:

654 nm / 674 nm

Applications

Applications testées:

FC

Spécificité de l'espèce:

Humain

Informations générales

CD206, also named as MMR, CLEC13D and MRC1, is a type I membrane receptor that mediates the endocytosis of glycoproteins by macrophages. CD206 has been shown to bind high-mannose structures on the surface of potentially pathogenic viruses, bacteria, and fungi so that they can be neutralized by phagocytic engulfment. CD206 is a 170 kDa transmembrane protein which contains 5 domains: an amino-terminal cysteine-rich region, a fibronectin type II repeat, a series of eight tandem lectin-like carbohydrate recognition domains (responsible for the recognition of mannose and fucose), a transmembrane domain, and an intracellular carboxy-terminal tail. It is expressed on most tissue macrophages, in vitro derived dendritic cells, lymphatic and sinusoidal endothelia.

Stockage

Stockage:

Store at 2-8°C. Avoid exposure to light. Stable for one year after shipment.

Tampon de stockage:

PBS with 0.09% sodium azide and 0.5% BSA.

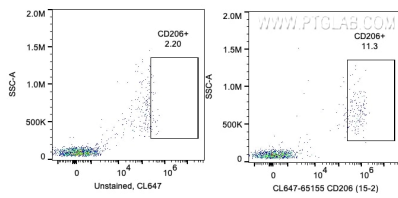
For technical support and original validation data for this product please contact:

T: 1 (888) 4PTGLAB (1-888-478-4522) (toll free in USA), or 1(312) 455-8498 (outside USA)

E: proteintech@ptglab.com
W: ptglab.com

This product is exclusively available under Proteintech Group brand and is not available to purchase from any other manufacturer.

Données de validation sélectionnées



1X10⁶ GM-CSF treated human PBMCs (red) or non-treated cells (blue) were surface stained with 5ul CoraLite® Plus 647 Anti-Human CD206 (CL647-65155, Clone:15-2). Cells were not fixed. Monocytes are gated.