

À des fins de recherche uniquement

# Anticorps Monoclonal anti-CD45R (B220)



Numéro de catalogue: **CL647-65139**

## Informations de base

Numéro de catalogue:

CL647-65139

Taille:

100ug, 0.5 mg/ml

Hôte:

Rat

Isotype:

IgG2a, kappa

Numéro d'acquisition GenBank:

BC028512

Identification du gène (NCBI):

19264

Nom complet:

protein tyrosine phosphatase,  
receptor type, C

Méthode de purification:

Purification par affinité

CloneNo.:

RA3-6B2

Dilutions recommandées:

IF 1:200-1:800

Excitation/Emission maxima  
wavelengths:

654 nm / 674 nm

## Applications

Applications testées:

FC, IF

Spécificité de l'espèce:

Humain, souris

Contrôles positifs:

IF : splénocytes de souris,

## Informations générales

CD45, also known as protein tyrosine phosphatase, receptor type C, is a type I transmembrane protein expressed on the surface of all haematopoietic cells with the exception of erythrocytes and platelets (PMID: 3489673; 28615666). CD45 is a pan-haematopoietic cell marker and has been shown to be essential for T- and B-cell activation and signalling (PMID: 9429890; 16378097). CD45R (B220) is an isoform of CD45, expressed on murine B-lineage cells (except for plasma cells) and on a small sub-population of T cells (PMID: 6975314; 15712182). It is commonly used as a pan B-cell marker in mice. CD45R is also expressed on activated T cells and NK cell subsets (PMID: 7514808; 17923504). The RA3-6B2 clone reacts with human and mouse CD45R.

## Stockage

Stockage:

Store at 2-8°C. Avoid exposure to light. Stable for one year after shipment.

Tampon de stockage:

PBS avec azoture de sodium à 0,1 % et BSA à 0,5 %, pH 7,3.

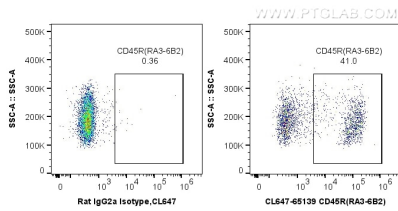
For technical support and original validation data for this product please contact:

T: 1 (888) 4PTGLAB (1-888-478-4522) (toll free  
in USA), or 1(312) 455-8498 (outside USA)

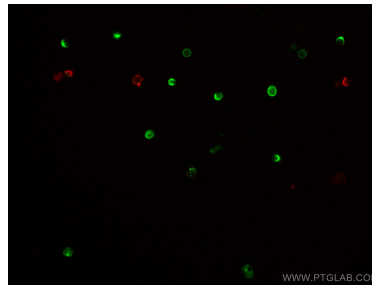
E: [proteintech@ptglab.com](mailto:proteintech@ptglab.com)  
W: [ptglab.com](http://ptglab.com)

**This product is exclusively available under Proteintech Group brand and is not available to purchase from any other manufacturer.**

## Données de validation sélectionnées



1X10<sup>6</sup> mouse splenocytes were surface stained with 0.5 ug Coralite® Plus 647 Anti-Mouse CD45R (B220) (CL647-65139, Clone:RA3-6B2), or 0.5 ug Control Antibody. Cells were not fixed.



Immunofluorescent analysis of mouse splenocytes using Coralite® Plus 647-conjugated CD45R (B220) antibody (CL647-65139, Clone: RA3-6B2, red) at dilution of 1:400, and Coralite® 488-conjugated CD3 antibody (CL488-65077, Clone: 17A2, green).