

À des fins de recherche uniquement

Anticorps Polyclonal de lapin anti-MAP1B



Numéro de catalogue: **CL647-21633** **Phare**

Informations de base

Numéro de catalogue: CL647-21633	Numéro d'acquisition GenBank: BC141853	Méthode de purification: Purification par affinité contre l'antigène
Taille: 100ul , Concentration: 1000 µg/ml by Nanodrop;	Identification du gène (NCBI): 4131	Excitation/Emission maxima wavelengths: 654 nm / 674 nm
Hôte: Lapin	Nom complet: microtubule-associated protein 1B	
Isotype: IgG	MW calculé: 2468 aa, 271 kDa	
Immunogen Catalog Number: AG16255	MW observés: 320 kDa	

Applications

Applications testées:
FC (Intra)
Spécificité de l'espèce:
Humain, souris

Informations générales

Microtubule-associated protein 1B (MAP1B) is a cytoskeleton protein which can promote microtubule assembly. Previous reports have suggested that this protein is closely involved in neuronal development based on its extensive expression in the developing brain and moderate in mature neurons. Gene disruption or knockout studies of the MAP1B gene led to a delayed development of the nervous system in mice. It includes the N-terminal heavy chain and a C-terminal light chain. The MAP1B heavy chain has a microtubule-stabilization effect, and contains an actin-binding site that may play a role in the crosslinking of actin and microtubules, a function that may be important in neurite elongation. Various isoforms around 300-350 kDa of MAP1B can be observed due to the differences in phosphorylation state. (10704485)

Stockage

Stockage:
Stocker à -20 °C. Éviter toute exposition à la lumière. Stable pendant un an après l'expédition.
Tampon de stockage:
PBS avec glycérol à 50 %, Proclin300 à 0,05 % et BSA à 0,5 %, pH 7,3.
L'aliquotage n'est pas nécessaire pour le stockage à -20C

*** Les 20ul contiennent 0,1% de BSA.

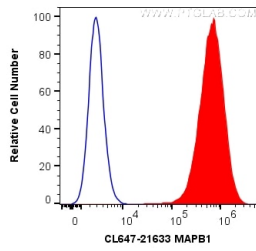
For technical support and original validation data for this product please contact:

T: 1 (888) 4PTGLAB (1-888-478-4522) (toll free in USA), or 1(312) 455-8498 (outside USA)

E: proteintech@ptglab.com
W: ptglab.com

This product is exclusively available under Proteintech Group brand and is not available to purchase from any other manufacturer.

Données de validation sélectionnées



1X10⁶ SH-SY5Y cells were intracellularly stained with 0.2 ug CoraLite® Plus 647 Anti-Human MAP1B (CL647-21633) (red), or 0.2 ug CL647-30000 Rabbit IgG (blue). Cells were fixed with 4% PFA and permeabilized with Flow Cytometry Perm Buffer (PF00011-C).