

À des fins de recherche uniquement

Anticorps Monoclonal anti-PSMB8

Numéro de catalogue: **CL594-66759**



Informations de base

Numéro de catalogue: CL594-66759	Numéro d'acquisition GenBank: BC001114	Méthode de purification: Purification par protéine G
Taille: 100ul , Concentration: 1000 µg/ml by Nanodrop;	Identification du gène (NCBI): 5696	CloneNo.: 2A5B6
Hôte: Mouse	Nom complet: proteasome (prosome, macropain) subunit, beta type, 8 (Large multifunctional peptidase 7)	Dilutions recommandées: IF 1:50-1:500
Isotype: IgG1	MW calculé 30 kDa	Excitation/Emission maxima wavelengths: 588 nm / 604 nm
Immunogen Catalog Number: AG6780	MW observés: 23 kDa	

Applications

Applications testées: FC (Intra), IF	Contrôles positifs: IF : cellules C2C12, cellules HeLa, tissu de cancer du foie humain
Spécificité de l'espèce: Humain, rat	

Informations générales

PSMB8 (Proteasome subunit beta type-8) is also named as LMP7, PSMB5i, RING10, Y2 and belongs to the peptidase T1B family. The gene encodes the chymotrypsin-like catalytic subunit of the immunoproteasome (PMID: 19525961). PSMB8 has a role in controlling pathogenic immune responses and may be a target in autoimmune disorders. Its prosequence is not essential for incorporation of PSMB8 into the maturing proteasome, but it increased the efficiency of PSMB8 incorporation and proteasome maturation (PMID: 10926487). The pro-PSMB8 is a 276aa protein with the molecular mass of 30 kDa, and the mature form is about 23kDa due to the 72aa propeptide cleaved. Defects in PSMB8 are the cause of Nakajo syndrome (NKJO).

Stockage

Stockage:
Stocker à -20 °C. Éviter toute exposition à la lumière. Stable pendant un an après l'expédition.
Tampon de stockage:
PBS avec glycérol à 50 %, Proclin300 à 0,05 % et BSA à 0,5 %, pH 7,3.
L'aliquotage n'est pas nécessaire pour le stockage à -20C

***** Les 20ul contiennent 0,1% de BSA.**

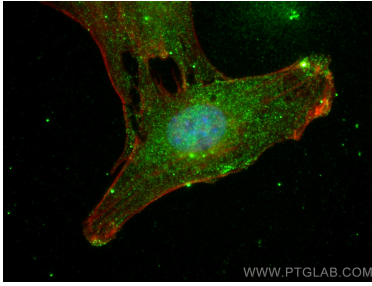
For technical support and original validation data for this product please contact:

T: 1 (888) 4PTGLAB (1-888-478-4522) (toll free in USA), or 1(312) 455-8498 (outside USA)

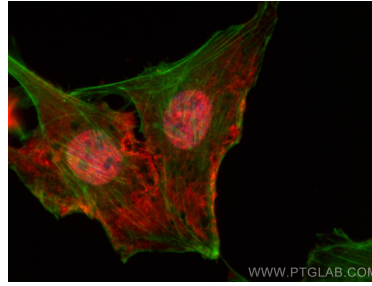
E: proteintech@ptglab.com
W: ptglab.com

This product is exclusively available under Proteintech Group brand and is not available to purchase from any other manufacturer.

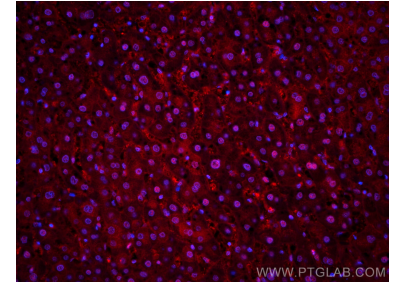
Données de validation sélectionnées



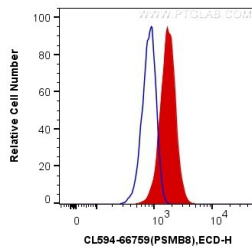
N/A



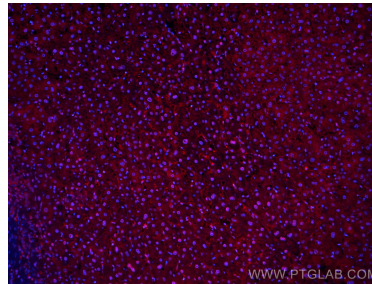
Immunofluorescent analysis of (4% PFA) fixed C2C12 cells using CoraLite®594 PSMB8 antibody (CL594-66759, Clone: 2A5B6) at dilution of 1:200, CL488-phalloidin (blue).



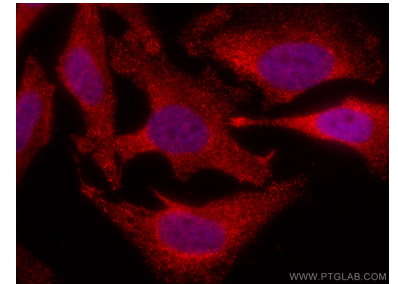
Immunofluorescent analysis of (4% PFA) fixed human liver cancer tissue using CoraLite®594 PSMB8 antibody (CL594-66759, Clone: 2A5B6) at dilution of 1:200.



1X10⁶ HeLa cells were intracellularly stained with 0.4 ug CoraLite®594 Anti-Human PSMB8 (CL594-66759, Clone:2A5B6) (red), or 0.4 ug Control Antibody. Cells were fixed and permeabilized with Transcription Factor Staining Buffer Kit (PF00011).



Immunofluorescent analysis of (4% PFA) fixed human liver cancer tissue using CoraLite®594 PSMB8 antibody (CL594-66759, Clone: 2A5B6) at dilution of 1:200.



Immunofluorescent analysis of (4% PFA) fixed HeLa cells using CoraLite®594 PSMB8 antibody (CL594-66759, Clone: 2A5B6) at dilution of 1:200.