

À des fins de recherche uniquement

# Anticorps Monoclonal anti-Ly-6G/Ly-6C (Gr-1)



Numéro de catalogue: **CL555-65140**

## Informations de base

Numéro de catalogue:  
CL555-65140

Taille:  
100ug, 0.5 mg/ml

Hôte:

Rat

Isotype:

IgG2b, kappa

Numéro d'acquisition GenBank:  
X70920

Identification du gène (NCBI):  
546644

Nom complet:

Lymphocyte antigen 6 complex, locus G

Méthode de purification:  
Purification par affinité

CloneNo.:  
RB6-8C5

Excitation/Emission maxima  
wavelengths:  
554 nm / 570 nm

## Applications

Applications testées:  
FC

Spécificité de l'espèce:  
souris

## Informations générales

Ly-6G (lymphocyte antigen 6 complex, locus G), also known as Gr-1, is a 21-25 kDa, glycosylphosphatidylinositol-anchored protein expressed on myeloid lineage cells in mouse bone marrow (PMID: 8360469). The expression of Ly-6G increases on neutrophils as they differentiate from immature cells in the bone marrow to mature cells in the blood and spleen (PMID: 8890901). Antibodies targeting Ly6G (RB6-8C5 or 1A8) are commonly used in studies aimed at identifying the role of neutrophils (PMID: 23543767). The RB6-8C5 mAb has been reported to cross-react with Ly-6C on cells expressing Ly-6C (PMID: 8360469).

## Stockage

Stockage:

Store at 2-8°C. Avoid exposure to light. Stable for one year after shipment.

Tampon de stockage:

PBS with 0.09% sodium azide.

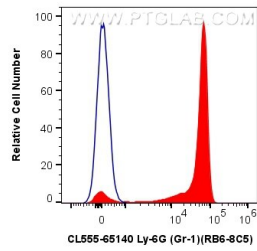
For technical support and original validation data for this product please contact:

T: 1 (888) 4PTGLAB (1-888-478-4522) (toll free  
in USA), or 1(312) 455-8498 (outside USA)

E: [proteintech@ptglab.com](mailto:proteintech@ptglab.com)  
W: [ptglab.com](http://ptglab.com)

**This product is exclusively available under Proteintech Group brand and is not available to purchase from any other manufacturer.**

## Données de validation sélectionnées



1X10<sup>6</sup> mouse bone marrow cells were surface stained with 0.5 ug CoraLite® Plus 555 Anti-Mouse Ly-6G/Ly-6C (Gr-1) (CL555-65140, Clone: RB6-8C5) (red), or 0.5 ug Isotype Control. Cells were not fixed.