

À des fins de recherche uniquement

Anticorps Monoclonal anti-CD25

Numéro de catalogue: **CL555-65137**



Informations de base

Numéro de catalogue:

CL555-65137

Taille:

100ug, 0.5 mg/ml

Hôte:

Rat

Isotype:

IgG1, lambda

Numéro d'acquisition GenBank:

BC114437

Identification du gène (NCBI):

16184

Nom complet:

interleukin 2 receptor, alpha chain

Méthode de purification:

Purification par affinité

CloneNo.:

PC61.5

Excitation/Emission maxima
wavelengths:

554 nm / 570 nm

Applications

Applications testées:

FC

Spécificité de l'espèce:

souris

Informations générales

Proliferation of T lymphocytes is triggered by the interaction of IL-2 with its specific receptor following T lymphocyte activation. The receptor for IL-2 has three forms, generated by different combinations of three different proteins, the alpha chain (IL-2R alpha), the beta chain (IL-2R beta), and the gamma chain (IL-2R gamma) (PMID: 8476561). IL-2R alpha (also known as CD25) is a type I transmembrane protein present on activated T cells, activated B cells, some thymocytes, myeloid precursors, and oligodendrocytes. CD25 is also found on natural CD4⁺Foxp3⁺ Treg cells (PMID: 22585674).

Stockage

Stockage:

Store at 2-8°C. Avoid exposure to light. Stable for one year after shipment.

Tampon de stockage:

PBS with 0.09% sodium azide.

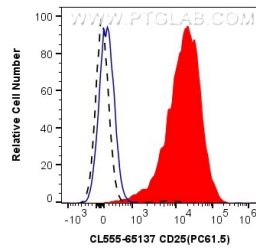
For technical support and original validation data for this product please contact:

T: 1 (888) 4PTGLAB (1-888-478-4522) (toll free
in USA), or 1(312) 455-8498 (outside USA)

E: proteintech@ptglab.com
W: ptglab.com

This product is exclusively available under Proteintech Group brand and is not available to purchase from any other manufacturer.

Données de validation sélectionnées



1×10^6 plate-bound Anti-CD3 and Anti-CD28 stimulated (red) or unstimulated (black dashed) mouse splenocytes were surface stained with 0.5 μ g CoraLite® Plus 555 Anti-Mouse CD25 (CL555-65137, Clone: PC61.5), or 0.5 μ g Isotype Control (blue). Cells were not fixed.