

À des fins de recherche uniquement

Anticorps Monoclonal anti-ABL1

Numéro de catalogue: CL488-68254



Informations de base

Numéro de catalogue: CL488-68254	Numéro d'acquisition GenBank: NM_005157	Méthode de purification: Purification par protéine A
Taille: 100ul , Concentration: 1000 µg/ml by 25 Nanodrop;	Identification du gène (NCBI): 25	CloneNo.: 1E7A5
Hôte: Mouse	Nom complet: c-abl oncogene 1, receptor tyrosine kinase	Dilutions recommandées: IF 1:50-1:500
Isotype: IgG2b	MW calculé: 123 kDa	Excitation/Emission maxima wavelengths: 493 nm / 522 nm
Immunogen Catalog Number: AG26152	MW observés: 140 kDa	

Applications

Applications testées: IF	Contrôles positifs: IF : cellules HepG2, cellules MCF-7
Spécificité de l'espèce: Humain	

Informations générales

ABL1, also named as ABL, JTK7, c-ABL and p150, belongs to the protein kinase superfamily, Tyr protein kinase family and ABL subfamily. ABL1 regulates cytoskeleton remodeling during cell differentiation, cell division and cell adhesion. ABL1 localizes to dynamic actin structures, and phosphorylates CRK and CRKL, DOK1, and other proteins controlling cytoskeleton dynamics. It regulates DNA repair potentially by activating the proapoptotic pathway when the DNA damage is too severe to be repaired. ABL1 catalyze the reaction: ATP + a [protein]-L-tyrosine = ADP + a [protein]-L-tyrosine phosphate. A chromosomal aberration involving ABL1 is a cause of chronic myeloid leukemia (CML) [MIM:608232]. Translocation t(9;22)(q34;q11) with BCR. The translocation produces a BCR-ABL found also in acute myeloid leukemia (AML) and acute lymphoblastic leukemia (ALL). The antibody is specific to ABL1.

Stockage

Stockage:
Stocker à -20 °C. Éviter toute exposition à la lumière. Stable pendant un an après l'expédition.
Tampon de stockage:
PBS avec glycérol à 50 %, Proclin300 à 0,05 % et BSA à 0,5 %, pH 7,3.
L'aliquotage n'est pas nécessaire pour le stockage à -20C

***** Les 20ul contiennent 0,1% de BSA.**

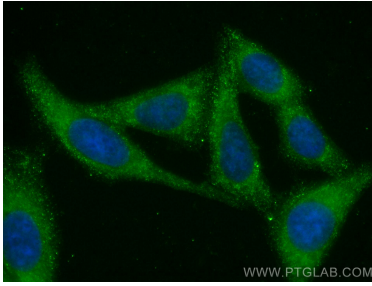
For technical support and original validation data for this product please contact:

T: 1 (888) 4PTGLAB (1-888-478-4522) (toll free
in USA), or 1(312) 455-8498 (outside USA)

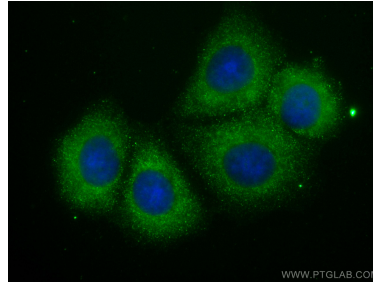
E: proteintech@ptglab.com
W: ptglab.com

This product is exclusively available under Proteintech Group brand and is not available to purchase from any other manufacturer.

Données de validation sélectionnées



Immunofluorescent analysis of (-20°C Ethanol) fixed HepG2 cells using CoraLite® Plus 488 ABL1 antibody (CL488-68254, Clone: 1E7A5) at dilution of 1:200.



Immunofluorescent analysis of (-20°C Methanol) fixed MCF-7 cells using CoraLite® Plus 488 ABL1 antibody (CL488-68254, Clone: 1E7A5) at dilution of 1:200.