

À des fins de recherche uniquement

# Anticorps Monoclonal anti-ENO3

Numéro de catalogue: CL488-68147



## Informations de base

Numéro de catalogue: CL488-68147	Numéro d'acquisition GenBank: BC017249	Méthode de purification: Purification par protéine A
Taille: 100ul, Concentration: 1000 µg/ml by Nanodrop;	Identification du gène (NCBI): 2027	CloneNo.: 2C12G3
Hôte: Mouse	Nom complet: enolase 3 (beta, muscle)	Dilutions recommandées: IF 1:50-1:500
Isotype: IgG2b	MW calculé 434 aa, 47 kDa	Excitation/Emission maxima wavelengths: 493 nm / 522 nm
Immunogen Catalog Number: AG9642	MW observés: 42-47 kDa	

## Applications

Applications testées: IF	Contrôles positifs: IF : cellules HeLa,
Spécificité de l'espèce: Humain, porc, rat, souris	

## Informations générales

Enolase 3 (ENO3) encodes the  $\beta$ -subunit of enolase, which is distributed in various tissues, including liver, lung, skeletal, and heart. ENO3 plays an important role in both glycogen and cholesterol metabolism. It has been demonstrated that ENO3 deficiency may lead to metabolic myopathies, and ENO3 speeds up hepatic cholesterol ester cumulation induced via the mediation of cholesteryl ester generation. Apart from these, ENO3 has also been involved in various tumors, though the results are contradictory. For example, ENO3 is up-regulated in STK11 mutant pulmonary carcinoma and colorectal carcinoma, while down-regulated in pancreatic cancer and hepatocellular carcinomas. ENO3 has 3 isoforms with the molecular mass of 42-47 kDa. (PMID: 33987359, 35004693)

## Stockage

**Stockage:**  
Stocker à -20 °C. Éviter toute exposition à la lumière. Stable pendant un an après l'expédition.  
**Tampon de stockage:**  
PBS avec glycérol à 50 %, Proclin300 à 0,05 % et BSA à 0,5 %, pH 7,3.  
L'aliquotage n'est pas nécessaire pour le stockage à -20C

**\*\*\* Les 20ul contiennent 0,1% de BSA.**

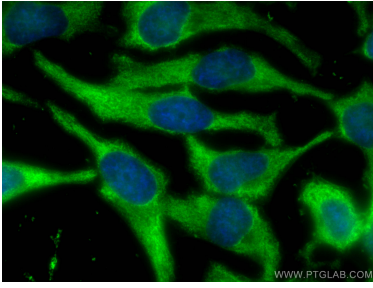
For technical support and original validation data for this product please contact:

T: 1 (888) 4PTGLAB (1-888-478-4522) (toll free  
in USA), or 1(312) 455-8498 (outside USA)

E: [proteintech@ptglab.com](mailto:proteintech@ptglab.com)  
W: [ptglab.com](http://ptglab.com)

**This product is exclusively available under Proteintech Group brand and is not available to purchase from any other manufacturer.**

## Données de validation sélectionnées



Immunofluorescent analysis of (-20°C Ethanol) fixed HeLa cells using CoraLite® Plus 488 ENO3 antibody (CL488-68147, Clone: 2C12G3 ) at dilution of 1:200.