

À des fins de recherche uniquement

Anticorps Monoclonal anti-PPP2R2B

Numéro de catalogue: CL488-67783



Informations de base

Numéro de catalogue: CL488-67783	Numéro d'acquisition GenBank: BC031790	Méthode de purification: Purification par protéine G
Taille: 100ul , Concentration: 1000 µg/ml by Nanodrop;	Identification du gène (NCBI): 5521	CloneNo.: 2E1D5
Hôte: Mouse	Nom complet: protein phosphatase 2 (formerly 2A), regulatory subunit B, beta isoform	Excitation/Emission maxima wavelengths: 493 nm / 522 nm
Isotype: IgG1	MW calculé 443 aa, 52 kDa	
Immunogen Catalog Number: AG30774	MW observés: 52 kDa	

Applications

Applications testées:
FC (Intra)

Spécificité de l'espèce:
Humain, Lapin, porc, rat, souris

Informations générales

The PPP2R2B gene encodes a deduced 443-amino acid protein of approximately 52 kDa, which is a brain-specific regulatory subunit B of protein phosphatase 2. PPP2R2B is a Subunit of PP2A, a highly conserved constitutive enzyme (PMID:11719278). PPP2R2B (Bβ) is an important regulator of protein phosphatase 2A (PP2A) activity in the brain. Through differential promoter usage and alternative splicing, two major isoforms Bβ1 and Bβ2 with divergent sub-cellular targeting N termini are produced. Bβ plays an important role in neuronal survival. It has 5 isoforms produced by alternative splicing.

Stockage

Stockage:
Stocker à -20 °C. Éviter toute exposition à la lumière. Stable pendant un an après l'expédition.

Tampon de stockage:
PBS avec glycérol à 50 %, Proclin300 à 0,05 % et BSA à 0,5 %, pH 7,3.
L'aliquotage n'est pas nécessaire pour le stockage à -20C

*** Les 20ul contiennent 0,1% de BSA.

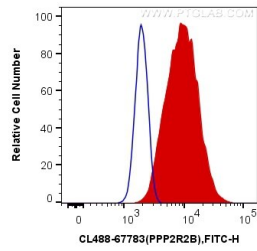
For technical support and original validation data for this product please contact:

T: 1 (888) 4PTGLAB (1-888-478-4522) (toll free
in USA), or 1(312) 455-8498 (outside USA)

E: proteintech@ptglab.com
W: ptglab.com

This product is exclusively available under Proteintech Group brand and is not available to purchase from any other manufacturer.

Données de validation sélectionnées



1X10⁶ HeLa cells were intracellularly stained with 0.4 ug Coralite® Plus 488 Anti-Human PPP2R2B (CL488-67783, Clone:2E1D5) (red), or 0.4 ug Control Antibody. Cells were fixed with 4% PFA and permeabilized with Flow Cytometry Perm Buffer (PF00011-C).