

À des fins de recherche uniquement

Anticorps Monoclonal anti-ERP29

Numéro de catalogue: CL488-67675



Informations de base

Numéro de catalogue: CL488-67675	Numéro d'acquisition GenBank: BC101495	Méthode de purification: Purification par protéine A
Taille: 100ul, Concentration: 1000 µg/ml by Nanodrop;	Identification du gène (NCBI): 10961	CloneNo.: 1H8B2
Hôte: Mouse	Nom complet: endoplasmic reticulum protein 29	Dilutions recommandées: IF 1:50-1:500
Isotype: IgG2a	MW calculé 261 aa, 29 kDa	Excitation/Emission maxima wavelengths: 493 nm / 522 nm
Immunogen Catalog Number: AG30262	MW observés: 29 kDa	

Applications

Applications testées: IF	Contrôles positifs: IF : tissu rénal humain,
Spécificité de l'espèce: Humain, rat, souris	

Informations générales

Endoplasmic reticulum resident protein 29 (ERP29) is a 29-kDa endoplasmic reticulum (ER) luminal protein. Structurally ERp29 is related to protein disulfide isomerases (PDI). However, it lacks the thioredoxin motif, suggesting that this protein does not function as a disulfide isomerase (PMID: 15500441). ERP29 plays an important role in the processing of secretory proteins within the (ER), possibly by participating in the folding of proteins in the ER. The secretion of thyroglobulin (TG) was found to be strongly regulated by ERP29 (PMID: 16380091).

Stockage

Stockage:
Stocker à -20 °C. Éviter toute exposition à la lumière.
Tampon de stockage:
PBS avec glycérol à 50 %, Proclin300 à 0,05 % et BSA à 0,5 %, pH 7,3.
L'aliquotage n'est pas nécessaire pour le stockage à -20C

***** Les 20ul contiennent 0,1% de BSA.**

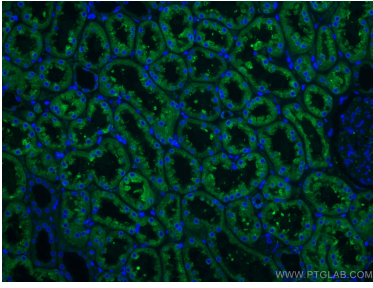
For technical support and original validation data for this product please contact:

T: 1 (888) 4PTGLAB (1-888-478-4522) (toll free
in USA), or 1(312) 455-8498 (outside USA)

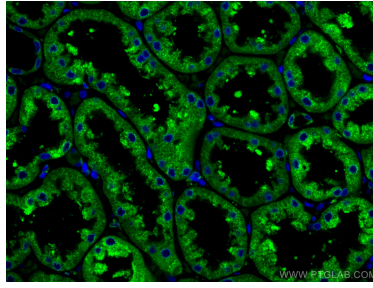
E: proteintech@ptglab.com
W: ptglab.com

This product is exclusively available under Proteintech Group brand and is not available to purchase from any other manufacturer.

Données de validation sélectionnées



Immunofluorescent analysis of (4% PFA) fixed human kidney tissue using CoraLite® Plus 488 ERP29 antibody (CL488-67675, Clone: 1H8B2) at dilution of 1:200.



Immunofluorescent analysis of (4% PFA) fixed human kidney tissue using CoraLite® Plus 488 ERP29 antibody (CL488-67675, Clone: 1H8B2) at dilution of 1:200.