

À des fins de recherche uniquement

Anticorps Monoclonal anti-CYP2E1-Specific



Numéro de catalogue: **CL488-67263**

Informations de base

Numéro de catalogue: CL488-67263	Numéro d'acquisition GenBank: NM_000773	Méthode de purification: Purification par protéine A
Taille: 100ul , Concentration: 1000 µg/ml by Nanodrop;	Identification du gène (NCBI): 1571	CloneNo.: 1F12G7
Hôte: Mouse	Nom complet: cytochrome P450, family 2, subfamily E, polypeptide 1	Excitation/Emission maxima wavelengths: 493 nm / 522 nm
Isotype: IgG2b	MW calculé: 57 kDa	
	MW observés: 50-57 kDa	

Applications

Applications testées:
FC (Intra)

Spécificité de l'espèce:
porc, rat, souris

Informations générales

CYP2E1, also named as CYP11E1, 4-nitrophenol 2-hydroxylase, P450-J and CYP2E, belongs to the cytochrome P450 family. CYP2E1 metabolizes several precarcinogens, drugs, and solvents to reactive metabolites. It inactivates a number of drugs and xenobiotics and also bioactivates many xenobiotic substrates to their hepatotoxic or carcinogenic forms. CYP2E1 catalyze the reaction: 4-nitrophenol + NADPH + O₂ = 4-nitrocatechol + NADP⁺ + H₂O. CYP2E1 can be detected as 50-57 kDa (full-length) and ~40 kDa (N-terminal signal peptide cleaved) (PMID: 21130154). The antibody is specific to CYP2E1.

Stockage

Stockage:
Stocker à -20 °C. Éviter toute exposition à la lumière. Stable pendant un an après l'expédition.

Tampon de stockage:
PBS avec glycérol à 50 %, Proclin300 à 0,05 % et BSA à 0,5 %, pH 7,3.
L'aliquotage n'est pas nécessaire pour le stockage à -20C

***** Les 20ul contiennent 0,1% de BSA.**

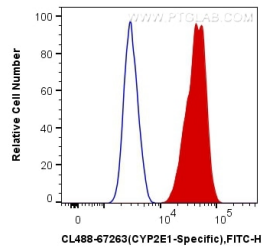
For technical support and original validation data for this product please contact:

T: 1 (888) 4PTGLAB (1-888-478-4522) (toll free in USA), or 1(312) 455-8498 (outside USA)

E: proteintech@ptglab.com
W: ptglab.com

This product is exclusively available under Proteintech Group brand and is not available to purchase from any other manufacturer.

Données de validation sélectionnées



1×10^6 HeLa cells were intracellularly stained with 0.4 μ g Coralite® Plus 488 Anti-Human CYP2E1-Specific (CL488-67263, Clone:1F12G7) (red), or 0.4 μ g Mouse IgG2b Isotype Control (CL488-66360-3, Clone: K11B8C4B5) (blue). Cells were fixed with 4% PFA and permeabilized with Flow Cytometry Perm Buffer (PF00011-C).