

À des fins de recherche uniquement

Anticorps Monoclonal anti-TRIM21

Numéro de catalogue: CL488-67136



Informations de base

Numéro de catalogue: CL488-67136	Numéro d'acquisition GenBank: BC010861	Méthode de purification: Purification par protéine G
Taille: 100ul , Concentration: 1000 µg/ml by Nanodrop;	Identification du gène (NCBI): 6737	CloneNo.: 1E8B9
Hôte: Mouse	Nom complet: tripartite motif-containing 21	Dilutions recommandées: IF 1:50-1:500
Isotype: IgG1	MW calculé 475 aa, 54 kDa	Excitation/Emission maxima wavelengths: 493 nm / 522 nm
Immunogen Catalog Number: AG28377	MW observés: 52 kDa	

Applications

Applications testées: IF	Contrôles positifs: IF : cellules HepG2,
Spécificité de l'espèce: Humain, rat, souris	

Informations générales

TRIM21 has multiple N-terminal zinc finger motifs (has E3 ligase activity), a central leucine zipper, and a potential N-glycosylation site. TRIM3 is a E3 ubiquitin-protein ligase. It can form a ubiquitin ligase complex with E2 UBE2D2, which function not only for the ubiquitination of USP4 and IKKB but also for its self-ubiquitination. It has a role in the regulation of the cell cycle progression and could enhance the decapping activity of DCP2. It can exist in all mammalian cells as a ribonucleoprotein particle, which composed of a single polypeptide and 1 of 4 small RNA molecules. TRIM21 exists various isoforms and range molecular weight of isoforms is about 42-45kDa and 49-54 kDa.

Stockage

Stockage:
Stocker à -20 °C. Éviter toute exposition à la lumière.
Tampon de stockage:
PBS avec glycérol à 50 %, Proclin300 à 0,05 % et BSA à 0,5 %, pH 7,3.
L'aliquotage n'est pas nécessaire pour le stockage à -20C

***** Les 20ul contiennent 0,1% de BSA.**

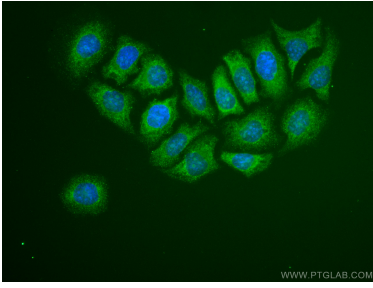
For technical support and original validation data for this product please contact:

T: 1 (888) 4PTGLAB (1-888-478-4522) (toll free
in USA), or 1(312) 455-8498 (outside USA)

E: proteintech@ptglab.com
W: ptglab.com

This product is exclusively available under Proteintech Group brand and is not available to purchase from any other manufacturer.

Données de validation sélectionnées



Immunofluorescent analysis of (-20°C Ethanol) fixed HepG2 cells using CoraLite® Plus 488 TRIM21 antibody (CL488-67136, Clone: 1E8B9) at dilution of 1:100. Blue (DAPI).