

À des fins de recherche uniquement

Anticorps Monoclonal anti-PDH E1 Alpha



Numéro de catalogue: **CL488-66119**

Phare

Informations de base

Numéro de catalogue: CL488-66119	Numéro d'acquisition GenBank: BC002406	Méthode de purification: Purification par protéine A
Taille: 100ul , Concentration: 1000 µg/ml by Nanodrop;	Identification du gène (NCBI): 5160	CloneNo.: 2B3C10
Hôte: Mouse	Nom complet: pyruvate dehydrogenase (lipoamide) alpha 1	Dilutions recommandées: WB 1:500-1:2000
Isotype: IgG2a	MW calculé 43 kDa	Excitation/Emission maxima wavelengths: 493 nm / 522 nm
Immunogen Catalog Number: AG12556	MW observés: 43 kDa	

Applications

Applications testées:

WB

Spécificité de l'espèce:

Humain

Contrôles positifs:

WB : cellules HepG2, cellules HEK-293

Informations générales

PDHA1(Pyruvate dehydrogenase E1 component subunit alpha, somatic form, mitochondrial) is also named as PHE1A.It is one of the 3 enzymes of the pyruvate dehydrogenase complex which is a nuclear-encoded mitochondrial matrix multienzyme complex that provides the primary link between glycolysis and the tricarboxylic acid (TCA) cycle by catalyzing the irreversible conversion of pyruvate into acetyl-CoA(PMID:7853374).It has 4 isoforms produced by alternative splicing.Defects in PDHA 1 are a cause of pyruvate dehydrogenase E1-alpha deficiency (PDHAD) and X-linked Leigh syndrome (X-LS).

Stockage

Stockage:

Stocker à -20 °C. Éviter toute exposition à la lumière. Stable pendant un an après l'expédition.

Tampon de stockage:

PBS avec glycérol à 50 %, Proclin300 à 0,05 % et BSA à 0,5 %, pH 7,3.

L'aliquotage n'est pas nécessaire pour le stockage à -20C

***** Les 20ul contiennent 0,1% de BSA.**

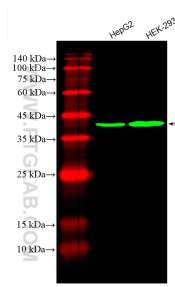
For technical support and original validation data for this product please contact:

T: 1 (888) 4PTGLAB (1-888-478-4522) (toll free
in USA), or 1(312) 455-8498 (outside USA)

E: proteintech@ptglab.com
W: ptglab.com

This product is exclusively available under Proteintech Group brand and is not available to purchase from any other manufacturer.

Données de validation sélectionnées



Various lysates were subjected to SDS PAGE followed by western blot with CL488-66119 (PDH E1 Alpha antibody) at dilution of 1:1000 incubated at room temperature for 1.5 hours.