

À des fins de recherche uniquement

Anticorps Monoclonal anti-CD80 (B7-1)



Numéro de catalogue: **CL488-65076**

Informations de base

Numéro de catalogue:
CL488-65076

Taille:
100tests, 5 µl/test

Hôte:
Armenian Hamster

Isotype:
IgG

Numéro d'acquisition GenBank:
BC131959

Identification du gène (NCBI):
12519

Nom complet:
CD80 antigen

Méthode de purification:
Purification par affinité

CloneNo.:
16-10A1

Excitation/Emission maxima
wavelengths:
493 nm / 522 nm

Applications

Applications testées:
FC

Spécificité de l'espèce:
souris

Informations générales

CD80 (also known as B7-1) is a type I membrane protein that is a member of the immunoglobulin superfamily, with an extracellular immunoglobulin constant-like domain and a variable-like domain required for receptor binding. It is expressed on antigen-presenting cells (APCs), including B cells, dendritic cells, monocytes, and macrophages. CD80 is the receptor for the proteins CD28 and CTLA-4 found on the surface of T-cells. It is involved in the costimulatory signal essential for T-lymphocyte activation. T-cell proliferation and cytokine production is induced by the binding of CD28, binding to CTLA-4 has opposite effects and inhibits T-cell activation. CD80 also acts as a cellular attachment receptor for adenovirus subgroup B. (PMID: 7545666; 12015893; 16920215)

Stockage

Stockage:

Stocker à une température comprise entre 2 °C et 8 °C. Éviter toute exposition à la lumière.

Tampon de stockage:

PBS avec azoture de sodium à 0,1 % et BSA à 0,5 %, pH 7,3.

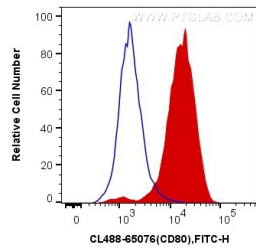
For technical support and original validation data for this product please contact:

T: 1 (888) 4PTGLAB (1-888-478-4522) (toll free
in USA), or 1(312) 455-8498 (outside USA)

E: proteintech@ptglab.com
W: ptglab.com

This product is exclusively available under Proteintech Group brand and is not available to purchase from any other manufacturer.

Données de validation sélectionnées



1X10⁶ Balb/c mouse peritoneal macrophages were surface stained with 5 ul CoraLite® Plus 488 Anti-Mouse CD80 (B7-1) (CL488-65076, Clone: 16-10A1) (red) or isotype control (blue). Cells were not fixed.