

À des fins de recherche uniquement

Anticorps Polyclonal de lapin anti-DDX21



Numéro de catalogue: **CL488-10528**

Phare

Informations de base

Numéro de catalogue: CL488-10528	Numéro d'acquisition GenBank: BC008071	Méthode de purification: Purification par affinité contre l'antigène
Taille: 100ul, Concentration: 1000 µg/ml by Nanodrop;	Identification du gène (NCBI): 9188	Dilutions recommandées: IF 1:50-1:500
Hôte: Lapin	Nom complet: DEAD (Asp-Glu-Ala-Asp) box polypeptide 21	Excitation/Emission maxima wavelengths: 493 nm / 522 nm
Isotype: IgG	MW calculé: 87 kDa	
Immunogen Catalog Number: AG0804	MW observés: 87 kDa	

Applications

Applications testées: FC (Intra), IF	Contrôles positifs: IF : cellules HepG2,
Spécificité de l'espèce: Humain, rat, souris	

Informations générales

DDX21 protein belongs to DEAD box protein family which is characterized by the conserved motif Asp-Glu-Ala-Asp (DEAD). As a putative RNA helicase, DDX21 unwinds double-stranded RNA, folds single-stranded RNA and is involved in process including ribosomal RNA biogenesis, RNA editing and general transcription. Interaction of DDX21 and c-Jun was reported in ribosomal RNA processing. DDX21 exists as two isoforms, molecular weight of modified isoform one is about 87-100 kDa, and the post-modified isoform is about 75-85 kDa. Catalog# 10528-1-AP is a rabbit polyclonal antibody raised against N-terminal of human DDX21.

Stockage

Stockage:
Stocker à -20 °C. Éviter toute exposition à la lumière.
Tampon de stockage:
PBS avec glycérol à 50 %, Proclin300 à 0,05 % et BSA à 0,5 %, pH 7,3.
L'aliquotage n'est pas nécessaire pour le stockage à -20C

***** Les 20ul contiennent 0,1% de BSA.**

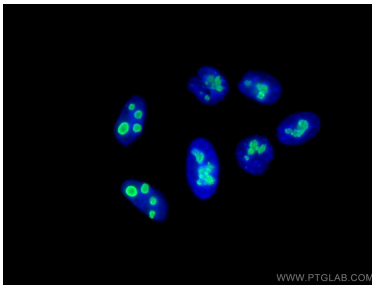
For technical support and original validation data for this product please contact:

T: 1 (888) 4PTGLAB (1-888-478-4522) (toll free in USA), or 1(312) 455-8498 (outside USA)

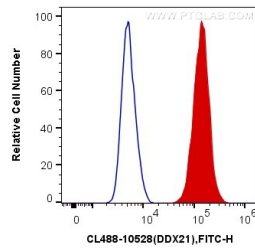
E: proteintech@ptglab.com
W: ptglab.com

This product is exclusively available under Proteintech Group brand and is not available to purchase from any other manufacturer.

Données de validation sélectionnées



Immunofluorescent analysis of (4% PFA) fixed HepG2 cells using CoraLite® Plus 488 DDX21 antibody (CL488-10528) at dilution of 1:200.



1X10⁶ HepG2 cells were intracellularly stained with 0.4 ug CoraLite® Plus 488 Anti-Human DDX21 (CL488-10528) (red), or 0.4 ug Control Antibody. Cells were fixed and permeabilized with Transcription Factor Staining Buffer Kit (PF00011).