

À des fins de recherche uniquement

Anticorps Recombinant de lapin anti-ZEB2



Numéro de catalogue:82020-1-RR

Informations de base

Numéro de catalogue: 82020-1-RR	Numéro d'acquisition GenBank: BC060819	Méthode de purification: Purification par protéine A
Taille: 100ul , Concentration: 1000 µg/ml by Nanodrop;	Identification du gène (NCBI): 9839	CloneNo.: 1K22
Hôte: Lapin	Nom complet: zinc finger E-box binding homeobox 2	Dilutions recommandées: 2WB 1:2000-1:10000 IHC 1:600-1:2400
Isotype: IgG	MW calculé 136 kDa	
Immunogen Catalog Number: AG5171	MW observés: 140-150 kD	

Applications

Applications testées:
IHC, WB, ELISA

Spécificité de l'espèce:
Humain

Remarque-IHC: il est suggéré de démasquer l'antigène avec un tampon de TE buffer pH 9,0; (*) À défaut, 'le démasquage de l'antigène peut être 'effectué avec un tampon citrate pH 6,0.

Contrôles positifs:

WB : cellules HepG2, cellules A549, cellules HeLa, cellules K-562

IHC : tissu de carcinome à cellules rénales humain,

Informations générales

Zinc finger E-box-binding homeobox (ZEB2) is a key transcription factor that acts as a multifunctional regulator during nervous system development. ZEB2 contains two zinc finger domains and a homeodomain-like sequence and interacts with the TGF- β superfamily signaling regulators, Smads, to regulate the expression of their downstream genes. ZEB2 is expressed in the developing neural tube, as well as in neural crest cells, the hippocampus and the cerebral cortex. ZEB2 has previously been implicated in EMT, cell-cycle progression, apoptosis and senescence. ZEB2 was overexpressed in bladder, ovarian, stomach, pancreatic and squamous cell carcinoma, in the intestinal subtype of stomach cancers, and at the invasive front of CRC where EMT is most prominent. ZEB2 also mediates cell-fate decision in neuronal, T cells and hematopoietic stem cells. PMID: 27659015)

Stockage

Stockage:

Stocker à -20°C. Stable pendant un an après l'expédition.

Tampon de stockage:

PBS avec azotate de sodium à 0,02 % et glycérol à 50 % pH 7,3

L'aliquotage n'est pas nécessaire pour le stockage à -20C

*** Les 20ul contiennent 0,1% de BSA.

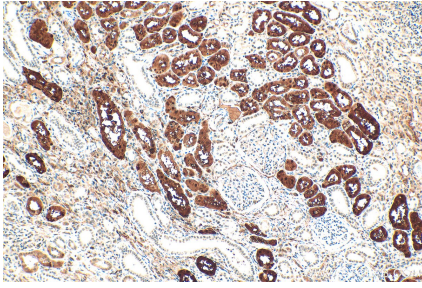
For technical support and original validation data for this product please contact:

T: 1 (888) 4PTGLAB (1-888-478-4522) (toll free in USA), or 1(312) 455-8498 (outside USA)

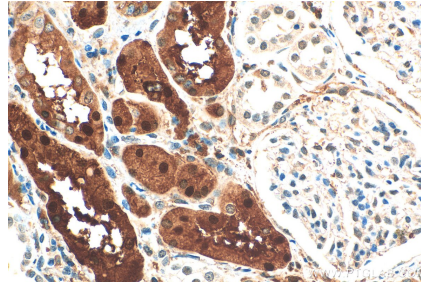
E: proteintech@ptglab.com
W: ptglab.com

This product is exclusively available under Proteintech Group brand and is not available to purchase from any other manufacturer.

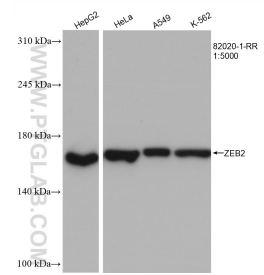
Données de validation sélectionnées



Immunohistochemical analysis of paraffin-embedded human renal cell carcinoma tissue slide using 82020-1-RR (ZEB2 antibody) at dilution of 1:1200 (under 10x lens). Heat mediated antigen retrieval with Tris-EDTA buffer (pH 9.0).



Immunohistochemical analysis of paraffin-embedded human renal cell carcinoma tissue slide using 82020-1-RR (ZEB2 antibody) at dilution of 1:1200 (under 40x lens). Heat mediated antigen retrieval with Tris-EDTA buffer (pH 9.0).



Various lysates were subjected to SDS PAGE followed by western blot with 82020-1-RR (ZEB2 antibody) at dilution of 1:5000 incubated at room temperature for 1.5 hours.