

À des fins de recherche uniquement

# Anticorps Recombinant de lapin anti-pan-RAS



Numéro de catalogue: 81615-1-RR

## Informations de base

Numéro de catalogue:	81615-1-RR	Numéro d'acquisition GenBank:	BC013572	Méthode de purification:	Purification par protéine A
Taille:	100ul , Concentration: 1000 µg/ml by Nanodrop;	Identification du gène (NCBI):	3845	CloneNo.:	2122
Hôte:	Lapin	Nom complet:	v-Ki-ras2 Kirsten rat sarcoma viral oncogene homolog	Dilutions recommandées:	WB 1:20000-1:100000 IHC 1:500-1:2000
Isotype:	IgG	MW calculé	188 aa, 21 kDa		
Immunogen Catalog Number:	AG2700	MW observés:	21 kDa		

## Applications

### Applications testées:

IHC, WB, ELISA

### Spécificité de l'espèce:

Humain, porc, rat, souris

**Remarque-IHC: il est suggéré de démasquer l'antigène avec un tampon de TE buffer pH 9,0; (\*) À défaut, 'le démasquage de l'antigène peut être effectué avec un tampon citrate pH 6,0.**

### Contrôles positifs:

WB : cellules HeLa, cellules A549, cellules HEK-293, tissu cérébral de rat, tissu cérébral de souris, tissu hépatique de porc

IHC : tissu de cancer du côlon humain,

## Informations générales

The 21 kDa guanine-nucleotide binding proteins (K-Ras, H-Ras, and N-Ras) belong to the Ras oncogene family, whose members are related to the transforming genes of mammalian sarcoma retroviruses. K-Ras, H-Ras, and N-Ras have similar structure and sequences. These proteins can bind GTP and GDP, and they have intrinsic GTPase activity. The ras genes are ubiquitously expressed although mRNA analysis suggests different level expression in tissue. Mutations in each ras gene frequently were found in different tumors, suggesting their involvement in the development of specific neoplasia. This antibody can recognize K-Ras, H-Ras, and N-Ras.

## Stockage

### Stockage:

Stocker à -20°C. Stable pendant un an après l'expédition.

### Tampon de stockage:

PBS avec azoture de sodium à 0,02 % et glycérol à 50 % pH 7,3

L'aliquotage n'est pas nécessaire pour le stockage à -20C

\*\*\* Les 20ul contiennent 0,1% de BSA.

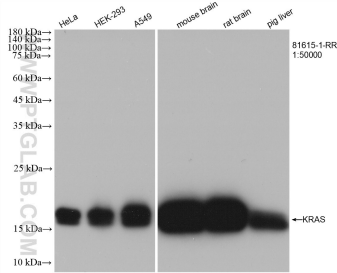
For technical support and original validation data for this product please contact:

T: 1 (888) 4PTGLAB (1-888-478-4522) (toll free in USA), or 1(312) 455-8498 (outside USA)

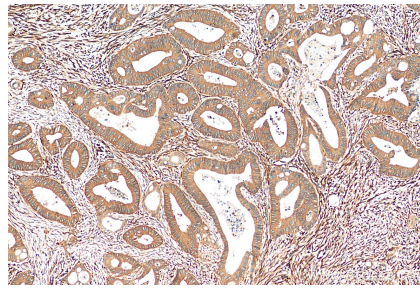
E: [proteintech@ptglab.com](mailto:proteintech@ptglab.com)  
W: [ptglab.com](http://ptglab.com)

This product is exclusively available under Proteintech Group brand and is not available to purchase from any other manufacturer.

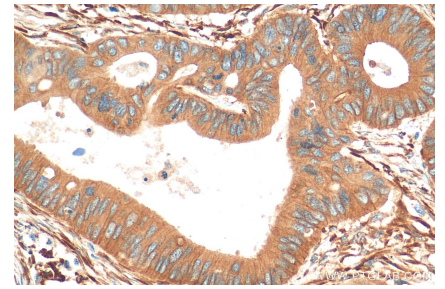
## Données de validation sélectionnées



Various lysates were subjected to SDS PAGE followed by western blot with 81615-1-RR (pan-RAS antibody) at dilution of 1:50000 incubated at room temperature for 1.5 hours.



Immunohistochemical analysis of paraffin-embedded human colon cancer tissue slide using 81615-1-RR (pan-RAS antibody) at dilution of 1:1000 (under 10x lens). Heat mediated antigen retrieval with Tris-EDTA buffer (pH 9.0).



Immunohistochemical analysis of paraffin-embedded human colon cancer tissue slide using 81615-1-RR (pan-RAS antibody) at dilution of 1:1000 (under 40x lens). Heat mediated antigen retrieval with Tris-EDTA buffer (pH 9.0).