

À des fins de recherche uniquement

Anticorps Recombinant de lapin anti-DDX21



Numéro de catalogue: 80932-1-RR

Informations de base

Numéro de catalogue: 80932-1-RR	Numéro d'acquisition GenBank: BC008071	Méthode de purification: Purification par protéine A
Taille: 100ul, Concentration: 1000 µg/ml by Nanodrop;	Identification du gène (NCBI): 9188	CloneNo.: 5E7
Hôte: Lapin	Nom complet: DEAD (Asp-Glu-Ala-Asp) box polypeptide 21	Dilutions recommandées: WB 1:5000-1:50000 IF 1:500-1:2000
Isotype: IgG	MW calculé 87 kDa	
Immunogen Catalog Number: AG0804	MW observés: 87 kDa	

Applications

Applications testées:
IF, WB, ELISA

Spécificité de l'espèce:
Humain

Contrôles positifs:

WB : cellules HeLa, cellules HEK-293, cellules HepG2, cellules HL-60, cellules Jurkat, cellules K-562, cellules THP-1

IF : cellules HepG2,

Informations générales

DDX21 protein belongs to DEAD box protein family which is characterized by the conserved motif Asp-Glu-Ala-Asp (DEAD). As a putative RNA helicase, DDX21 unwinds double-stranded RNA, folds single-stranded RNA and is involved in process including ribosomal RNA biogenesis, RNA editing and general transcription. Interaction of DDX21 and c-Jun was reported in ribosomal RNA processing. DDX21 exists as two isoforms, molecular weight of modified isoform one is about 87 -100 kDa, and the post-modified isoform is about 75-85 kDa.

Stockage

Stockage:
Stocker à -20 °C.

Tampon de stockage:
PBS avec azoture de sodium à 0,02 % et glycérol à 50 % pH 7,3

L'aliquotage n'est pas nécessaire pour le stockage à -20C

*** Les 20ul contiennent 0,1% de BSA.

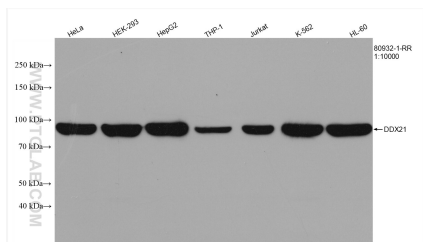
For technical support and original validation data for this product please contact:

T: 1 (888) 4PTGLAB (1-888-478-4522) (toll free
in USA), or 1(312) 455-8498 (outside USA)

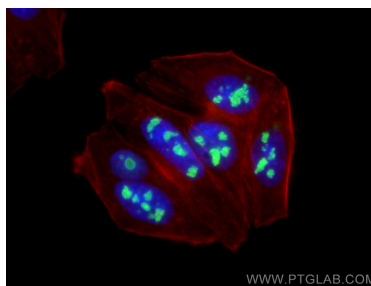
E: proteintech@ptglab.com
W: ptglab.com

This product is exclusively available under Proteintech Group brand and is not available to purchase from any other manufacturer.

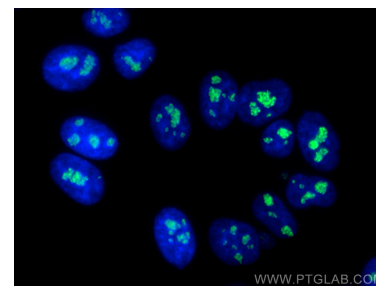
Données de validation sélectionnées



Various lysates were subjected to SDS PAGE followed by western blot with 80932-1-RR (DDX21 antibody) at dilution of 1:10000 incubated at room temperature for 1.5 hours.



Immunofluorescent analysis of (4% PFA) fixed HepG2 cells using DDX21 antibody (80932-1-RR, Clone: 5E7) at dilution of 1:1000 and CoraLite®488-Conjugated AffiniPure Goat Anti-Rabbit IgG(H+L), CL594-Phalloidin (red).



Immunofluorescent analysis of (4% PFA) fixed HepG2 cells using DDX21 antibody (80932-1-RR, Clone: 5E7) at dilution of 1:1000 and CoraLite®488-Conjugated AffiniPure Goat Anti-Rabbit IgG(H+L).