

À des fins de recherche uniquement

Anticorps Recombinant de lapin anti-PAX8



Numéro de catalogue: 80756-1-RR

Informations de base

Numéro de catalogue: 80756-1-RR	Numéro d'acquisition GenBank: BC001060	Méthode de purification: Purification par protéine A
Taille: 100ul, Concentration: 1000 µg/ml by Nanodrop;	Identification du gène (NCBI): 7849	CloneNo.: 6B14
Hôte: Lapin	Nom complet: paired box 8	Dilutions recommandées: WB 1:5000-1:50000 IHC 1:5000-1:20000 IF 1:650-1:2600
Isotype: IgG	MW calculé 48 kDa	
Immunogen Catalog Number: AG0306	MW observés: 48 kDa, 58 kDa	

Applications

Applications testées:
IF, IHC, WB, ELISA

Spécificité de l'espèce:
Humain, souris

Remarque-IHC: il est suggéré de démasquer l'antigène avec un tampon de TE buffer pH 9,0; (*) À défaut, 'le démasquage de l'antigène peut être effectué avec un tampon citrate pH 6,0.

Contrôles positifs:

WB : cellules SKOV-3,

IHC : tissu de tumeur ovarienne humain, tissu de cancer de la thyroïde humain, tissu de carcinome à cellules rénales humain, tissu rénal de souris

IF : cellules SKOV-3,

Informations générales

PAX8 is a member of the paired box (PAX) family of transcription factors, typically containing a paired box domain and a paired-type homeodomain. It is expressed during organogenesis of the thyroid gland, kidney and Mullerian system. It is thought to regulate the expression of Wilms tumor suppressor (WT1) gene and mutations in PAX8 have been associated with Wilms tumor cells, thyroid and ovarian carcinomas. PAX8 is a useful marker in distinguishing ovarian carcinomas from mammary carcinomas (PMID: 18724243). PAX8 is expressed in a high percentage of ovarian serous, endometrioid, and clear cell carcinomas, but only rarely in primary ovarian mucinous adenocarcinoma.

Stockage

Stockage:

Stocker à -20°C. Stable pendant un an après l'expédition.

Tampon de stockage:

PBS avec azoture de sodium à 0,02 % et glycérol à 50 % pH 7,3

L'aliquotage n'est pas nécessaire pour le stockage à -20C

*** Les 20ul contiennent 0,1% de BSA.

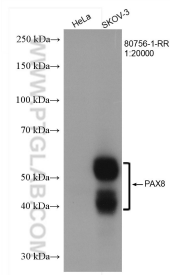
For technical support and original validation data for this product please contact:

T: 1 (888) 4PTGLAB (1-888-478-4522) (toll free
in USA), or 1(312) 455-8498 (outside USA)

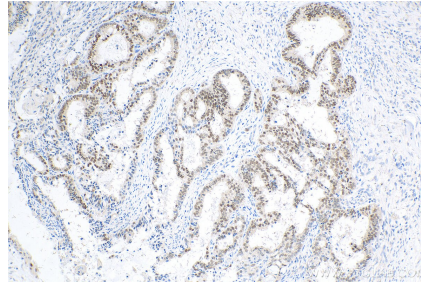
E: proteintech@ptglab.com
W: ptglab.com

This product is exclusively available under Proteintech Group brand and is not available to purchase from any other manufacturer.

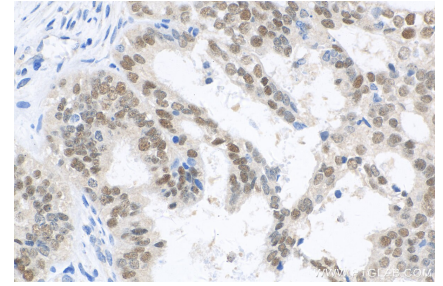
Données de validation sélectionnées



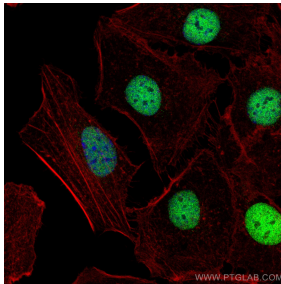
Various lysates were subjected to SDS PAGE followed by western blot with 80756-1-RR (PAX8 antibody) at dilution of 1:20000 incubated at room temperature for 1.5 hours.



Immunohistochemical analysis of paraffin-embedded human ovary tumor tissue slide using 80756-1-RR (PAX8 antibody) at dilution of 1:8300 (under 10x lens). Heat mediated antigen retrieval with Tris-EDTA buffer (pH 9.0).



Immunohistochemical analysis of paraffin-embedded human ovary tumor tissue slide using 80756-1-RR (PAX8 antibody) at dilution of 1:8300 (under 40x lens). Heat mediated antigen retrieval with Tris-EDTA buffer (pH 9.0).



Immunofluorescent analysis of (4% PFA) fixed SKOV-3 cells using PAX8 antibody (80756-1-RR, Clone: 6B14) at dilution of 1:1300 and CoraLite®488-Conjugated AffiniPure Goat Anti-Rabbit IgG(H+L), CL594-Phalloidin (red).