

À des fins de recherche uniquement

# Anticorps Monoclonal anti-ATP6

Numéro de catalogue: 68442-1-Ig



## Informations de base

Numéro de catalogue: 68442-1-Ig	Numéro d'acquisition GenBank: YP_003024031	Méthode de purification: Purification par protéine G
Taille: 150ul , Concentration: 1000 µg/ml by Nanodrop;	Identification du gène (NCBI): 4508	CloneNo.: 1H4G5
Hôte: Mouse	Nom complet: ATP synthase 6; ATPase subunit 6	Dilutions recommandées: WB 1:5000-1:50000
Isotype: IgG1	MW calculé: 25 kDa	
Immunogen Catalog Number: AG31940	MW observés: 25-30 kDa	

## Applications

Applications testées:  
WB, ELISA  
Spécificité de l'espèce:  
Humain, rat

### Contrôles positifs:

WB : tissu cérébral de rat, tissu cardiaque de rat, tissu de cervelet de rat, tissu hépatique de rat

## Informations générales

ATP synthase, also known as FoF1 complex, is a critical mitochondrial OXPHOS enzyme involved in the regulation of mitochondrial ATP production and in the maintenance of the mitochondrial membrane potential. It is composed of three components (F1, Fo and the peripheral stalk). F1, the soluble catalytic core, is above the membrane, inside the matrix of the mitochondria; consists of 5 different subunits (alpha, beta, gamma, delta, and epsilon); Fo, comprising the proton channel, is within the membrane; Fo seems to have nine subunits (a, b, c, d, e, f, g, F6 and 8). ATP6 is the a subunit of Fo region.

## Stockage

Stockage:  
Stocker à -20°C. Stable pendant un an après l'expédition.  
Tampon de stockage:  
PBS avec azoture de sodium à 0,02 % et glycérol à 50 % pH 7,3  
L'aliquotage n'est pas nécessaire pour le stockage à -20C

\*\*\* Les 20ul contiennent 0,1% de BSA.

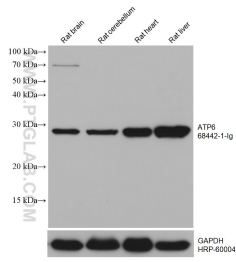
For technical support and original validation data for this product please contact:

T: 1 (888) 4PTGLAB (1-888-478-4522) (toll free  
in USA), or 1(312) 455-8498 (outside USA)

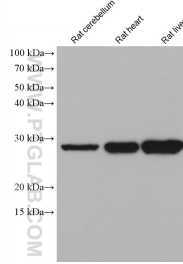
E: [proteintech@ptglab.com](mailto:proteintech@ptglab.com)  
W: [ptglab.com](http://ptglab.com)

This product is exclusively available under Proteintech Group brand and is not available to purchase from any other manufacturer.

## Données de validation sélectionnées



Various lysates were subjected to SDS PAGE followed by western blot with 68442-1-Ig (ATP6 antibody) at dilution of 1:10000 incubated at room temperature for 1.5 hours. The membrane was stripped and reblotted with HRP-conjugated GAPDH Monoclonal antibody (HRP-60004) as loading control.



Various lysates were subjected to SDS PAGE followed by western blot with 68442-1-Ig (ATP6 antibody) at dilution of 1:10000 incubated at room temperature for 1.5 hours.