

À des fins de recherche uniquement

# Anticorps Monoclonal anti-TSC2

Numéro de catalogue: 68380-1-Ig



## Informations de base

|   |  |  |
|---|--|--|
| <b>Numéro de catalogue:</b><br>68380-1-Ig                       | <b>Numéro d'acquisition GenBank:</b><br>BC150300 | <b>Méthode de purification:</b><br>Purification par protéine A         |
| <b>Taille:</b><br>150ul, Concentration: 1000 µg/ml by Nanodrop; | <b>Identification du gène (NCBI):</b><br>7249    | <b>CloneNo.:</b><br>1A10B2   |
| <b>Hôte:</b><br>Mouse   | <b>Nom complet:</b><br>tuberous sclerosis 2      | <b>Dilutions recommandées:</b><br>WB 1:2000-1:10000<br>IF 1:400-1:1600 |
| <b>Isotype:</b><br>IgG1   | <b>MW calculé:</b><br>1807 aa, 201 kDa           |  |
|   | <b>MW observés:</b><br>200 kDa                   |  |

## Applications

**Applications testées:**  
IF, WB, ELISA

**Spécificité de l'espèce:**  
Humain, souris

### Contrôles positifs:

**WB :** cellules A549, cellules HEK-293, cellules HeLa, cellules HSC-T6, cellules Jurkat, cellules K-562, cellules LNCaP, cellules MCF-7, cellules NIH/3T3, cellules PC-3, cellules U2OS

**IF :** cellules HEK-293,

## Informations générales

TSC2, also named Tuberin, plays an essential role in the cellular energy response pathway. TSC2 forms a physical and functional complex with TSC1 that can inhibit the nutrient-mediated or growth factor-stimulated phosphorylation of S6K1 and EIF4EBP1 by negatively regulating mTORC1 signaling.

## Stockage

**Stockage:**  
Stocker à -20°C. Stable pendant un an après l'expédition.

**Tampon de stockage:**  
PBS avec azoture de sodium à 0,02 % et glycérol à 50 % pH 7,3

L'aliquotage n'est pas nécessaire pour le stockage à -20C

\*\*\* Les 20ul contiennent 0,1% de BSA.

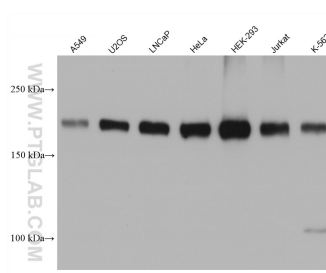
For technical support and original validation data for this product please contact:

T: 1 (888) 4PTGLAB (1-888-478-4522) (toll free in USA), or 1(312) 455-8498 (outside USA)

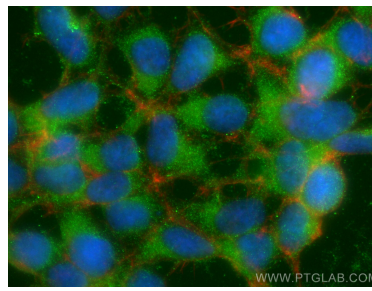
E: [proteintech@ptglab.com](mailto:proteintech@ptglab.com)  
W: [ptglab.com](http://ptglab.com)

This product is exclusively available under Proteintech Group brand and is not available to purchase from any other manufacturer.

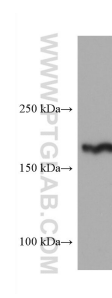
## Données de validation sélectionnées



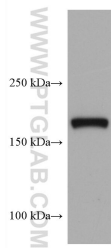
Various lysates were subjected to SDS PAGE followed by western blot with 68380-1-Ig (TSC2 antibody) at dilution of 1:5000 incubated at room temperature for 1.5 hours.



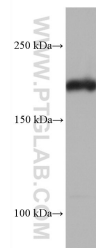
Immunofluorescent analysis of (-20°C Ethanol) fixed HEK-293 cells using TSC2 antibody (68380-1-Ig, Clone: 1A10B2) at dilution of 1:800 and CoraLite®488-Conjugated AffiniPure Goat Anti-Mouse IgG(H+L), CL594-Phalloidin (red).



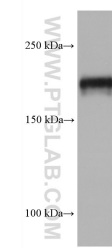
MCF-7 cells were subjected to SDS PAGE followed by western blot with 68380-1-Ig (TSC2 antibody) at dilution of 1:5000 incubated at room temperature for 1.5 hours.



PC-3 cells were subjected to SDS PAGE followed by western blot with 68380-1-Ig (TSC2 antibody) at dilution of 1:5000 incubated at room temperature for 1.5 hours.



NIH/3T3 cells were subjected to SDS PAGE followed by western blot with 68380-1-Ig (TSC2 antibody) at dilution of 1:5000 incubated at room temperature for 1.5 hours.



HSC-T6 cells were subjected to SDS PAGE followed by western blot with 68380-1-Ig (TSC2 antibody) at dilution of 1:5000 incubated at room temperature for 1.5 hours.