

À des fins de recherche uniquement

Anticorps Monoclonal anti-SMNDC1

Numéro de catalogue: 68344-1-Ig



Informations de base

Numéro de catalogue: 68344-1-Ig	Numéro d'acquisition GenBank: BC011234	Méthode de purification: Purification par protéine G
Taille: 150ul, Concentration: 1000 µg/ml by Nanodrop;	Identification du gène (NCBI): 10285	CloneNo.: 1B10C2
Hôte: Mouse	Nom complet: survival motor neuron domain containing 1	Dilutions recommandées: WB 1:5000-1:50000
Isotype: IgG1	MW calculé 238 aa, 27 kDa	
Immunogen Catalog Number: AG33140	MW observés: 32 kDa	

Applications

Applications testées:
WB, ELISA
Spécificité de l'espèce:
Humain

Contrôles positifs:

WB : cellules LNCaP, cellules Daudi, cellules HEK-293, cellules HeLa, cellules Jurkat, cellules K-562

Informations générales

Survival motor neuron domain-containing protein 1 (SMNDC1), also known as survival of motor neuron-related-splicing factor 30 (SPF30) or SMN-related protein (SMNR), is a constituent of the spliceosome complex that plays an essential role in spliceosome assembly by recruiting U4/U5/U6 tri-snRNP to the pre-spliceosomal complex (PMID: 9817934; 11331595; 30904945). Both SMNDC1 and SMN1 contain a highly conserved central Tudor domain which functions as a protein-protein interaction surface and mediates binding to the spliceosomal Sm proteins (PMID: 11331595).

Stockage

Stockage:
Stocker à -20°C. Stable pendant un an après l'expédition.
Tampon de stockage:
PBS avec azoture de sodium à 0,02 % et glycérol à 50 % pH 7,3
L'aliquotage n'est pas nécessaire pour le stockage à -20C

*** Les 20ul contiennent 0,1% de BSA.

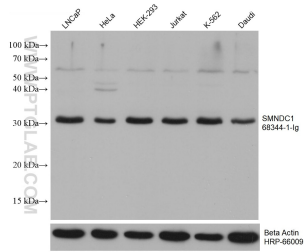
For technical support and original validation data for this product please contact:

T: 1 (888) 4PTGLAB (1-888-478-4522) (toll free
in USA), or 1(312) 455-8498 (outside USA)

E: proteintech@ptglab.com
W: ptglab.com

This product is exclusively available under Proteintech Group brand and is not available to purchase from any other manufacturer.

Données de validation sélectionnées



Various lysates were subjected to SDS PAGE followed by western blot with 68344-1-Ig (SMNDC1 antibody) at dilution of 1:10000 incubated at room temperature for 1.5 hours. The membrane was stripped and reblotted with HRP-conjugated Beta Actin Monoclonal antibody (HRP-66009) as loading control.