

À des fins de recherche uniquement

Anticorps Monoclonal anti-CCS

Numéro de catalogue: 68341-1-Ig



Informations de base

Numéro de catalogue: 68341-1-Ig	Numéro d'acquisition GenBank: BC105016	Méthode de purification: Purification par protéine A
Taille: 150ul, Concentration: 1000 µg/ml by Nanodrop;	Identification du gène (NCBI): 9973	CloneNo.: 3F5E5
Hôte: Mouse	Nom complet: copper chaperone for superoxide dismutase	Dilutions recommandées: WB 1:5000-1:50000 IF 1:500-1:2000
Isotype: IgG2a	MW calculé 274 aa, 29 kDa	
Immunogen Catalog Number: AG18860	MW observés: 32 kDa	

Applications

Applications testées: IF, WB, ELISA	Contrôles positifs:
Spécificité de l'espèce: Humain, rat, souris	WB : cellules LNCaP, cellules A549, cellules HepG2 IF : cellules HepG2,

Informations générales

Copper chaperone for superoxide dismutase (CCS) is a soluble factor that converts copper into copper-zinc superoxide dismutase (SOD1). CCS and SOD1 interact directly in vivo and in vitro, and this interaction is mediated by homologous domains in each protein. CCS not only interacts with wild-type SOD1 but also interacts with SOD1 containing common missense mutations, resulting in FALS.

Stockage

Stockage:
Stocker à -20°C. Stable pendant un an après l'expédition.
Tampon de stockage:
PBS avec azoture de sodium à 0,02 % et glycérol à 50 % pH 7,3
L'aliquotage n'est pas nécessaire pour le stockage à -20C

***** Les 20ul contiennent 0,1% de BSA.**

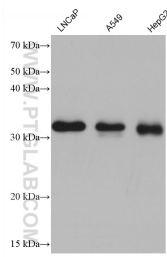
For technical support and original validation data for this product please contact:

T: 1 (888) 4PTGLAB (1-888-478-4522) (toll free
in USA), or 1(312) 455-8498 (outside USA)

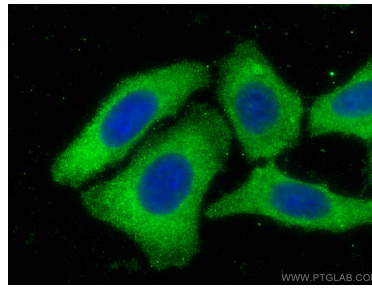
E: proteintech@ptglab.com
W: ptglab.com

This product is exclusively available under Proteintech Group brand and is not available to purchase from any other manufacturer.

Données de validation sélectionnées



Various lysates were subjected to SDS PAGE followed by western blot with 68341-1-Ig (CCS antibody) at dilution of 1:10000 incubated at room temperature for 1.5 hours.



Immunofluorescent analysis of (-20°C Methanol) fixed HepG2 cells using CCS antibody (68341-1-Ig, Clone: 3F5E5) at dilution of 1:1000 and CoraLite®488-Conjugated AffiniPure Goat Anti-Mouse IgG(H+L).