

À des fins de recherche uniquement

# Anticorps Monoclonal anti-PBLD

Numéro de catalogue: 68317-1-Ig



## Informations de base

Numéro de catalogue: 68317-1-Ig	Numéro d'acquisition GenBank: BC009738	Méthode de purification: Purification par protéine G
Taille: 150ul , Concentration: 1000 µg/ml by Nanodrop;	Identification du gène (NCBI): 64081	CloneNo.: 1G11D4
Hôte: Mouse	Nom complet: phenazine biosynthesis-like protein domain containing	Dilutions recommandées: WB 1:2000-1:10000
Isotype: IgG1	MW observés: 30 kDa	
Immunogen Catalog Number: AG23827		

## Applications

Applications testées: WB, ELISA	Contrôles positifs: WB : tissu hépatique de porc, tissu rénal de porc
Spécificité de l'espèce: Humain, porc	

## Informations générales

PBLD, also termed as MAWBP, was first identified from a human liver cDNA library using a yeast two-hybrid technique by Iriyama et al. As the only representative of phenazine biosynthesis-like protein family, PBLD is widely expressed in human tissues, such as brain, heart, lung, liver, pancreas, kidney, and placenta. Its expression is elevated in several diseases processes, including insulin resistance, folate deficiency, and hypotension. PBLD has been proved to be involved in gastric carcinogenesis, PBLD expression was attenuated in gastric cancer (GC) tissues, and negatively regulated the growth and invasion in gastric cancer cell-lines by inhibiting TGF-β1-induced EMT (Epithelial-Mesenchymal Transition). (PMID: 11355021, 17929853, 23687415, 26594798)

## Stockage

**Stockage:**  
Stocker à -20°C. Stable pendant un an après l'expédition.  
**Tampon de stockage:**  
PBS avec azoture de sodium à 0,02 % et glycérol à 50 % pH 7,3  
L'aliquotage n'est pas nécessaire pour le stockage à -20C

**\*\*\* Les 20ul contiennent 0,1% de BSA.**

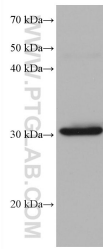
For technical support and original validation data for this product please contact:

T: 1 (888) 4PTGLAB (1-888-478-4522) (toll free  
in USA), or 1(312) 455-8498 (outside USA)

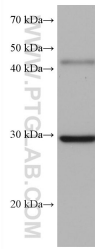
E: [proteintech@ptglab.com](mailto:proteintech@ptglab.com)  
W: [ptglab.com](http://ptglab.com)

**This product is exclusively available under Proteintech Group brand and is not available to purchase from any other manufacturer.**

## Données de validation sélectionnées



pig liver tissue were subjected to SDS PAGE followed by western blot with 68317-1-Ig (PBLD antibody) at dilution of 1:5000 incubated at room temperature for 1.5 hours.



pig kidney tissue were subjected to SDS PAGE followed by western blot with 68317-1-Ig (PBLD antibody) at dilution of 1:5000 incubated at room temperature for 1.5 hours.