

À des fins de recherche uniquement

Anticorps Monoclonal anti-NRCAM

Numéro de catalogue: 68291-1-Ig



Informations de base

Numéro de catalogue: 68291-1-Ig	Numéro d'acquisition GenBank: BC098401	Méthode de purification: Purification par protéine A
Taille: 150ul , Concentration: 1000 µg/ml by Nanodrop;	Identification du gène (NCBI): 4897	CloneNo.: 2E1C3
Hôte: Mouse	Nom complet: neuronal cell adhesion molecule	Dilutions recommandées: WB 1:5000-1:50000 IF 1:200-1:800
Isotype: IgG2b	MW calculé 1304 aa, 144 kDa	
Immunogen Catalog Number: AG20558	MW observés: 130-140 kDa	

Applications

Applications testées:
IF, WB, ELISA

Spécificité de l'espèce:
Humain, porc, rat, souris

Contrôles positifs:

WB : tissu cérébral de rat, tissu cérébral de porc, tissu
cérébral de souris, tissu de cervelet de porc, tissu de
cervelle de rat

IF : tissu cérébral de souris,

Informations générales

Neuronal cell adhesion molecule (NRCAM) is a member of the L1 subfamily of cell adhesion molecules (CAMs) that belong to the immunoglobulin superfamily (PMID: 11329126). NRCAM is a transmembrane protein composed of six Ig-like domains and five fibronectin type-III repeats in the extracellular region, with a highly conserved cytoplasmic tail. It is mainly expressed in the nervous system and is involved in neuron-neuron adhesion and promotes directional signaling during axonal cone growth. NRCAM is also expressed outside the nervous system. Altered expression of NRCAM has been associated with tumor progression in diverse organs (PMID: 22182708).

Stockage

Stockage:
Stocker à -20°C. Stable pendant un an après l'expédition.

Tampon de stockage:
PBS avec azote de sodium à 0,02 % et glycérol à 50 % pH 7,3
L'aliquotage n'est pas nécessaire pour le stockage à -20C

*** Les 20ul contiennent 0,1% de BSA.

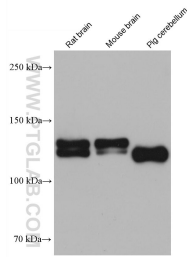
For technical support and original validation data for this product please contact:

T: 1 (888) 4PTGLAB (1-888-478-4522) (toll free
in USA), or 1(312) 455-8498 (outside USA)

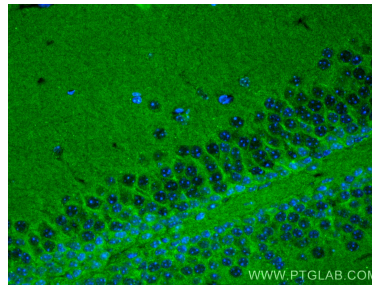
E: proteintech@ptglab.com
W: ptglab.com

This product is exclusively available under Proteintech Group brand and is not available to purchase from any other manufacturer.

Données de validation sélectionnées



Various lysates were subjected to SDS PAGE followed by western blot with 68291-1-Ig (NRCAM antibody) at dilution of 1:20000 incubated at room temperature for 1.5 hours.



Immunofluorescent analysis of (4% PFA) fixed mouse brain tissue using NRCAM antibody (68291-1-Ig, Clone: 2E1C3) at dilution of 1:400 and CoraLite®488-Conjugated AffiniPure Goat Anti-Mouse IgG(H+L).