

À des fins de recherche uniquement

Anticorps Monoclonal anti-CARD11

Numéro de catalogue: 68269-1-Ig



Informations de base

Numéro de catalogue: 68269-1-Ig	Numéro d'acquisition GenBank: BC111719	Méthode de purification: Purification par protéine G
Taille: 150ul, Concentration: 1000 µg/ml by Nanodrop;	Identification du gène (NCBI): 84433	CloneNo.: 3F5H6
Hôte: Mouse	Nom complet: caspase recruitment domain family, member 11	Dilutions recommandées: WB 1:2000-1:10000 IF 1:400-1:1600
Isotype: IgG1	MW calculé 1154 aa, 133 kDa	
Immunogen Catalog Number: AG16468	MW observés: 140 kDa	

Applications

Applications testées:
IF, WB, ELISA

Spécificité de l'espèce:
Humain

Contrôles positifs:

WB : cellules MOLT-4, cellules Jurkat, cellules K-562,
cellules Raji

IF : cellules L02,

Informations générales

CARD11 also named as BIMP3 or CARMA1, is a 1154 amino acid protein, which contains one PDZ domain, one guanylate kinase-like domain, and one CARD domain. CARD11 localizes in the cytoplasm and co-localized with DPP4 in membrane raft. CARD11 is detected in adult peripheral blood leukocytes, thymus, spleen and liver. CARD11 also is found in CARD11 promyelocytic leukemia HL-60 cells, chronic myelogenous leukemia K-562 cells, Burkitt's lymphoma Raji cells and colorectal adenocarcinoma SW480 cells. CARD11 is involved in the co-stimulatory signal essential for T-cell receptor mediated T-cell activation.

Stockage

Stockage:
Stocker à -20°C. Stable pendant un an après l'expédition.

Tampon de stockage:
PBS avec azoture de sodium à 0,02 % et glycérol à 50 % pH 7,3

L'aliquotage n'est pas nécessaire pour le stockage à -20C

*** Les 20ul contiennent 0,1% de BSA.

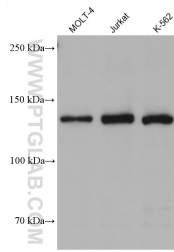
For technical support and original validation data for this product please contact:

T: 1 (888) 4PTGLAB (1-888-478-4522) (toll free
in USA), or 1(312) 455-8498 (outside USA)

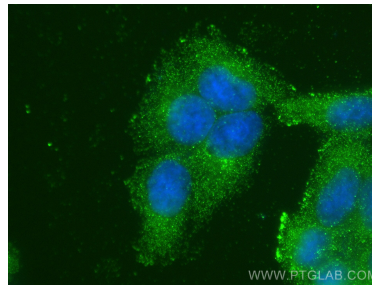
E: proteintech@ptglab.com
W: ptglab.com

This product is exclusively available under Proteintech Group brand and is not available to purchase from any other manufacturer.

Données de validation sélectionnées



Various lysates were subjected to SDS PAGE followed by western blot with 68269-1-Ig (CARD11 antibody) at dilution of 1:5000 incubated at room temperature for 1.5 hours.



Immunofluorescent analysis of (-20°C Ethanol) fixed L02 cells using CARD11 antibody (68269-1-Ig, Clone: 3F5H6) at dilution of 1:800 and CoraLite®488-Conjugated AffiniPure Goat Anti-Mouse IgG(H+L).