

À des fins de recherche uniquement

Anticorps Monoclonal anti-KIAA1429

Numéro de catalogue: 68235-1-Ig



Informations de base

Numéro de catalogue: 68235-1-Ig	Numéro d'acquisition GenBank: BC113380	Méthode de purification: Purification par protéine G
Taille: 150ul, Concentration: 500 µg/ml by Nanodrop;	Identification du gène (NCBI): 25962	CloneNo.: 3F1A4
Hôte: Mouse	Nom complet: KIAA1429	Dilutions recommandées: WB 1:5000-1:50000
Isotype: IgG1	MW calculé 1812 aa, 202 kDa	
Immunogen Catalog Number: AG22449	MW observés: 200-210 kDa	

Applications

Applications testées:
FC, WB, ELISA
Spécificité de l'espèce:
Humain, souris

Contrôles positifs:

WB : cellules LNCaP, cellules 4T1, cellules HEK-293,
cellules HeLa, cellules HepG2, cellules Jurkat, cellules
K-562, cellules NIH/3T3

Informations générales

VIRMA (KIAA1429) is a key component of m6A methyltransferase (writer) complex that include METTL3, METTL14, WTAP, VIRMA, HAKAI, ZC3H13, and RBM15. VIRMA mediates methylation in the 3'UTR and around the stop codon, thus affecting alternative polyadenylation. VIRMA has been reported to act as oncogenic factor in breast cancer and liver cancer.

Stockage

Stockage:
Stocker à -20°C. Stable pendant un an après l'expédition.
Tampon de stockage:
PBS avec azoture de sodium à 0,02 % et glycérol à 50 % pH 7,3
L'aliquotage n'est pas nécessaire pour le stockage à -20C

***** Les 20ul contiennent 0,1% de BSA.**

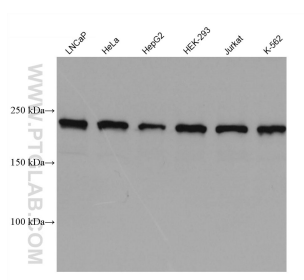
For technical support and original validation data for this product please contact:

T: 1 (888) 4PTGLAB (1-888-478-4522) (toll free
in USA), or 1(312) 455-8498 (outside USA)

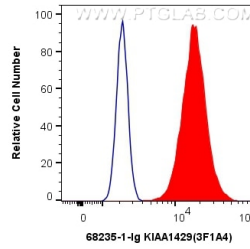
E: proteintech@ptglab.com
W: ptglab.com

This product is exclusively available under Proteintech Group brand and is not available to purchase from any other manufacturer.

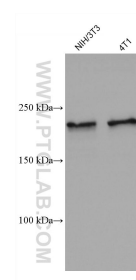
Données de validation sélectionnées



Various lysates were subjected to SDS PAGE followed by western blot with 68235-1-Ig (KIAA1429 antibody) at dilution of 1:20000 incubated at room temperature for 1.5 hours.



1×10^6 MCF-7 cells were intracellularly stained with 0.4 μ g Anti-Human KIAA1429 (68235-1-Ig, Clone:3F1A4) and CoraLite[®]488-Conjugated AffiniPure Goat Anti-Mouse IgG(H+L) at dilution 1:1000 (red), or 0.4 μ g Control Antibody. Cells were fixed with 4% PFA and permeabilized with Flow Cytometry Perm Buffer (PF00011-C).



Various lysates were subjected to SDS PAGE followed by western blot with 68235-1-Ig (KIAA1429 antibody) at dilution of 1:20000 incubated at room temperature for 1.5 hours.