

À des fins de recherche uniquement

# Anticorps Monoclonal anti-CD163

Numéro de catalogue: 68218-1-Ig



## Informations de base

Numéro de catalogue: 68218-1-Ig	Numéro d'acquisition GenBank: BC051281	Méthode de purification: Purification par protéine G
Taille: 150ul , Concentration: 1000 µg/ml by Nanodrop;	Identification du gène (NCBI): 9332	CloneNo.: 2G7A5
Hôte: Mouse	Nom complet: CD163 molécule	Dilutions recommandées: WB 1:5000-1:50000 IHC 1:2500-1:10000 IF 1:200-1:800
Isotype: IgG1	MW calculé 1156 aa, 125 kDa	
Immunogen Catalog Number: AG26721	MW observés: 145 kDa	

## Applications

### Applications testées:

IF, IHC, WB, ELISA

### Spécificité de l'espèce:

Humain

**Remarque-IHC: il est suggéré de démasquer l'antigène avec un tampon de TE buffer pH 9,0; (\*) À défaut, 'le démasquage de l'antigène peut être effectué avec un tampon citrate pH 6,0.**

### Contrôles positifs:

WB : tissu placentaire humain,

IHC : tissu hépatique humain, tissu d'amygdalite humain, tissu d'appendicite humaine, tissu de cancer du poumon humain, tissu placentaire humain

IF : tissu hépatique humain,

## Informations générales

CD163 is a transmembrane protein which belongs to the scavenger receptor cysteine-rich (SRCR) superfamily. This protein is a scavenger receptor for the hemoglobin-haptoglobin complex and is a marker for monocytes and macrophages. Soluble CD163 (sCD163), as a result of ectodomain shedding during inflammatory activation of macrophages, circulates in blood and has been suggested as a plasma/serum marker for macrophage activity.

## Stockage

### Stockage:

Stocker à -20°C. Stable pendant un an après l'expédition.

### Tampon de stockage:

PBS avec azoture de sodium à 0,02 % et glycérol à 50 % pH 7,3

L'aliquotage n'est pas nécessaire pour le stockage à -20C

\*\*\* Les 20ul contiennent 0,1% de BSA.

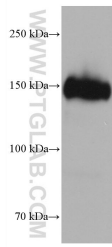
For technical support and original validation data for this product please contact:

T: 1 (888) 4PTGLAB (1-888-478-4522) (toll free in USA), or 1(312) 455-8498 (outside USA)

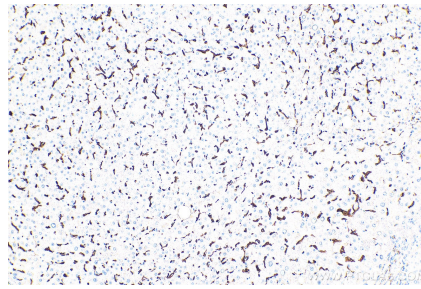
E: proteintech@ptglab.com  
W: ptglab.com

This product is exclusively available under Proteintech Group brand and is not available to purchase from any other manufacturer.

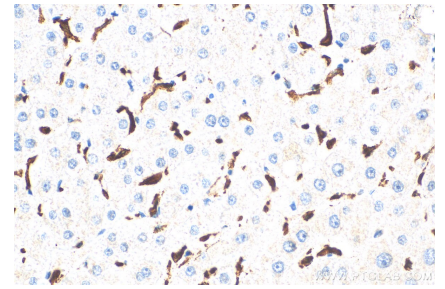
## Données de validation sélectionnées



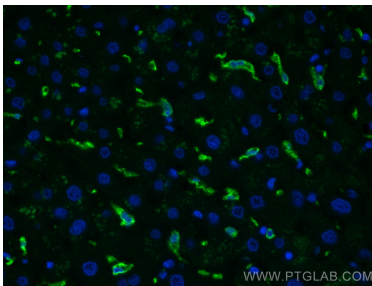
human placenta tissue were subjected to SDS PAGE followed by western blot with 68218-1-Ig (CD163 antibody) at dilution of 1:10000 incubated at room temperature for 1.5 hours.



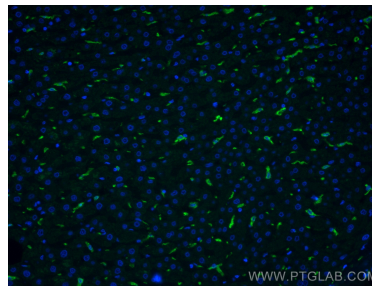
Immunohistochemical analysis of paraffin-embedded human liver tissue slide using 68218-1-Ig (CD163 antibody) at dilution of 1:5000 (under 10x lens). Heat mediated antigen retrieval with Tris-EDTA buffer (pH 9.0).



Immunohistochemical analysis of paraffin-embedded human liver tissue slide using 68218-1-Ig (CD163 antibody) at dilution of 1:5000 (under 40x lens). Heat mediated antigen retrieval with Tris-EDTA buffer (pH 9.0).



Immunofluorescent analysis of (4% PFA) fixed human liver tissue using CD163 antibody (68218-1-Ig, Clone: 2G7A5) at dilution of 1:400 and CoraLite@488-Conjugated AffiniPure Goat Anti-Mouse IgG(H+L).



Immunofluorescent analysis of (4% PFA) fixed human liver tissue using CD163 antibody (68218-1-Ig, Clone: 2G7A5) at dilution of 1:400 and CoraLite@488-Conjugated AffiniPure Goat Anti-Mouse IgG(H+L).