

À des fins de recherche uniquement

# Anticorps Monoclonal anti-CYP2S1

Numéro de catalogue: 68198-1-Ig



## Informations de base

|                           |                                               |                                |                                                                         |                          |                             |
|---------------------------|-----------------------------------------------|--------------------------------|-------------------------------------------------------------------------|--------------------------|-----------------------------|
| Numéro de catalogue:      | 68198-1-Ig                                    | Numéro d'acquisition GenBank:  | BC033691                                                                | Méthode de purification: | Purification par protéine G |
| Taille:                   | 150ul, Concentration: 1000 µg/ml by Nanodrop; | Identification du gène (NCBI): | 29785                                                                   | CloneNo.:                | 3E5D4                       |
| Hôte:                     | Mouse                                         | Nom complet:                   | cytochrome P450, family 2, subfamily WB 1:2000-1:10000 S, polypeptide 1 | Dilutions recommandées:  |                             |
| Isotype:                  | IgG1                                          | MW calculé                     | 504 aa, 56 kDa                                                          |                          |                             |
| Immunogen Catalog Number: | AG4605                                        | MW observés:                   | 50-56 kDa                                                               |                          |                             |

## Applications

Applications testées:  
WB, ELISA  
Spécificité de l'espèce:  
Humain, porc

Contrôles positifs:

WB : cellules NCCIT, cellules A549, cellules HeLa, tissu de côlon de porc, tissu rectal de porc

## Informations générales

The cytochrome P450 (CYP) family of isoenzymes are involved in the metabolism of diverse endogenous compounds and detoxification of exogenous agents. Cytochrome P450 2S1 (CYP2S1) is one 'orphan' CYP, and is particularly expressed in epithelial cells of tissues which are exposed to the environment such as the skin, respiratory, gastrointestinal, and urinary tracts. CYP2S1 is associated primarily with the synthesis and metabolism of lipids including prostaglandins (PGE2) and retinoids. In addition, CYP2S1 expression is associated with patient survival in breast cancer.

## Stockage

Stockage:  
Stocker à -20°C. Stable pendant un an après l'expédition.  
Tampon de stockage:  
PBS avec azoture de sodium à 0,02 % et glycérol à 50 % pH 7,3  
L'aliquotage n'est pas nécessaire pour le stockage à -20C

\*\*\* Les 20ul contiennent 0,1% de BSA.

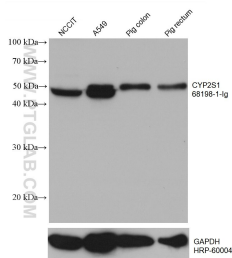
For technical support and original validation data for this product please contact:

T: 1 (888) 4PTGLAB (1-888-478-4522) (toll free in USA), or 1(312) 455-8498 (outside USA)

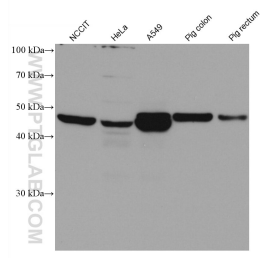
E: [proteintech@ptglab.com](mailto:proteintech@ptglab.com)  
W: [ptglab.com](http://ptglab.com)

This product is exclusively available under Proteintech Group brand and is not available to purchase from any other manufacturer.

## Données de validation sélectionnées



Various lysates were subjected to SDS PAGE followed by western blot with 68198-1-Ig (CYP2S1 antibody) at dilution of 1:5000 incubated at room temperature for 1.5 hours. The membrane was stripped and reblotted with HRP-conjugated GAPDH Monoclonal antibody (HRP-60004) as loading control.



Various lysates were subjected to SDS PAGE followed by western blot with 68198-1-Ig (CYP2S1 antibody) at dilution of 1:5000 incubated at room temperature for 1.5 hours.