

À des fins de recherche uniquement

Anticorps Monoclonal anti-VPS25

Numéro de catalogue: 68197-1-Ig



Informations de base

Numéro de catalogue: 68197-1-Ig	Numéro d'acquisition GenBank: BC006282	Méthode de purification: Purification par protéine G
Taille: 150ul, Concentration: 1000 µg/ml by Nanodrop;	Identification du gène (NCBI): 84313	CloneNo.: 3B4C3
Hôte: Mouse	Nom complet: vacuolar protein sorting 25 homolog (S. cerevisiae)	Dilutions recommandées: WB 1:5000-1:50000 IF 1:400-1:1600
Isotype: IgG1	MW calculé 176 aa, 21 kDa	
Immunogen Catalog Number: AG8243	MW observés: 19 kDa	

Applications

Applications testées:
IF, WB, ELISA

Spécificité de l'espèce:
Humain, Lapin

Contrôles positifs:

WB : cellules HEK-293, cellules HeLa, cellules HepG2,
cellules Jurkat, tissu rénal de lapin

IF : cellules HepG2,

Informations générales

VPS25 is a component of the endosome-associated complex ESCRT-II (Endosomal Sorting Complexes Required for Transport protein II). ESCRT-II complex, composed of VPS25, VPS36, and SNF8, functions in sorting of ubiquitinated membrane proteins during endocytosis. ESCRT-II complex is probably involved in the recruitment of the ESCRT-III complex. VPS25 is highly conserved. Human VPS25 gene maps to chromosome 17q21.31 and is expressed in a wide range of tissues (PMID: 16889659).

Stockage

Stockage:

Stocker à -20°C. Stable pendant un an après l'expédition.

Tampon de stockage:

PBS avec azoture de sodium à 0,02 % et glycérol à 50 % pH 7,3

L'aliquotage n'est pas nécessaire pour le stockage à -20C

*** Les 20ul contiennent 0,1% de BSA.

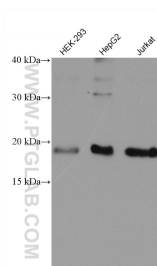
For technical support and original validation data for this product please contact:

T: 1 (888) 4PTGLAB (1-888-478-4522) (toll free
in USA), or 1(312) 455-8498 (outside USA)

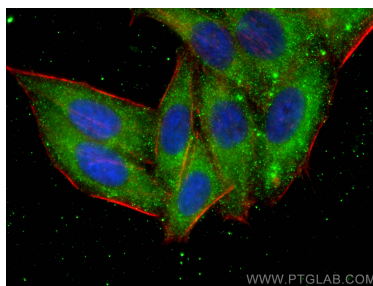
E: proteintech@ptglab.com
W: ptglab.com

This product is exclusively available under Proteintech Group brand and is not available to purchase from any other manufacturer.

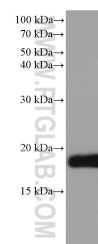
Données de validation sélectionnées



Various lysates were subjected to SDS PAGE followed by western blot with 68197-1-Ig (VPS25 antibody) at dilution of 1:10000 incubated at room temperature for 1.5 hours.



Immunofluorescent analysis of (-20°C Ethanol) fixed HepG2 cells using VPS25 antibody (68197-1-Ig, Clone: 3B4C3) at dilution of 1:800 and CoraLite®488-Conjugated AffiniPure Goat Anti-Mouse IgG(H+L), CL594-Phalloidin (red).



rabbit kidney tissue were subjected to SDS PAGE followed by western blot with 68197-1-Ig (VPS25 antibody) at dilution of 1:5000 incubated at room temperature for 1.5 hours.