

À des fins de recherche uniquement

Anticorps Monoclonal anti-TCP1

Numéro de catalogue: 68183-1-Ig



Informations de base

Numéro de catalogue: 68183-1-Ig	Numéro d'acquisition GenBank: BC000665	Méthode de purification: Purification par protéine G
Taille: 150ul , Concentration: 1000 µg/ml by Nanodrop;	Identification du gène (NCBI): 6950	CloneNo.: 2C2F6
Hôte: Mouse	Nom complet: t-complex 1	Dilutions recommandées: WB 1:5000-1:50000 IF 1:400-1:1600
Isotype: IgG1	MW calculé 60 kDa	
Immunogen Catalog Number: AG0389	MW observés: 55-60 kDa	

Applications

Applications testées:
FC, IF, WB, ELISA

Spécificité de l'espèce:
Humain

Contrôles positifs:

WB : cellules LNCaP, cellules HEK-293, cellules HeLa,
cellules HepG2, cellules Jurkat, cellules K-562

IF : cellules HeLa,

Informations générales

Stockage

Stockage:
Stocker à -20°C. Stable pendant un an après l'expédition.

Tampon de stockage:
PBS avec azoture de sodium à 0,02 % et glycérol à 50 % pH 7,3
L'aliquotage n'est pas nécessaire pour le stockage à -20C

*** Les 20ul contiennent 0,1% de BSA.

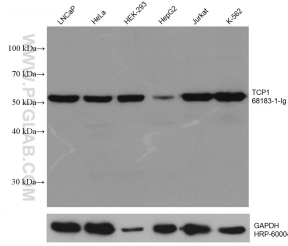
For technical support and original validation data for this product please contact:

T: 1 (888) 4PTGLAB (1-888-478-4522) (toll free
in USA), or 1(312) 455-8498 (outside USA)

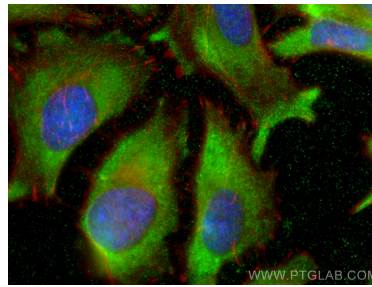
E: proteintech@ptglab.com
W: ptglab.com

This product is exclusively available under Proteintech Group brand and is not available to purchase from any other manufacturer.

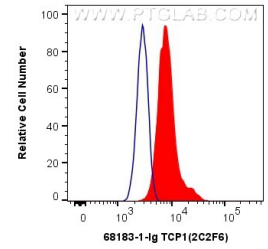
Données de validation sélectionnées



Various lysates were subjected to SDS PAGE followed by western blot with 68183-1-Ig (TCP1 antibody) at dilution of 1:10000 incubated at room temperature for 1.5 hours. The membrane was stripped and reblotted with HRP-conjugated GAPDH Monoclonal antibody (HRP-60004) as loading control.



Immunofluorescent analysis of (-20°C Ethanol) fixed HeLa cells using TCP1 antibody (68183-1-Ig, Clone: 2C2F6) at dilution of 1:800 and CoraLite®488-Conjugated AffiniPure Goat Anti-Mouse IgG(H+L), CL594-Phalloidin (red).



1X10⁶ HeLa cells were intracellularly stained with 0.4 ug Anti-Human TCP1 (68183-1-Ig, Clone:2C2F6) and CoraLite®488-Conjugated AffiniPure Goat Anti-Mouse IgG(H+L) at dilution 1:1000 (red), or 0.4 ug Mouse IgG1 Isotype Control (MOPC-21) (65124-1-Ig, Clone: MOPC-21) (blue). Cells were fixed with 4% PFA and permeabilized with Flow Cytometry Perm Buffer (PF00011-C).