

À des fins de recherche uniquement

Anticorps Monoclonal anti-ENO3

Numéro de catalogue: 68147-1-Ig



Informations de base

Numéro de catalogue: 68147-1-Ig	Numéro d'acquisition GenBank: BC017249	Méthode de purification: Purification par protéine A
Taille: 150ul , Concentration: 1000 µg/ml by Nanodrop and 386 µg/ml by Bradford method using BSA as the standard;	Identification du gène (NCBI): 2027	CloneNo.: 2C12G3
Hôte: Mouse	Nom complet: enolase 3 (beta, muscle)	Dilutions recommandées: WB 1:5000-1:50000 IF 1:400-1:1600
Isotype: IgG2b	MW calculé 434 aa, 47 kDa	
Immunogen Catalog Number: AG9642	MW observés: 42-47 kDa	

Applications

Applications testées:
IF, WB, ELISA

Spécificité de l'espèce:
Humain, porc, rat, souris

Contrôles positifs:

WB : cellules HeLa, cellules HEK-293, cellules HepG2, cellules Jurkat, tissu cérébral de souris, tissu de muscle squelettique de lapin, tissu de muscle squelettique de porc, tissu de muscle squelettique de rat, tissu de muscle squelettique de souris

IF : cellules HeLa,

Informations générales

Enolase 3 (ENO3) encodes the β -subunit of enolase, which is distributed in various tissues, including liver, lung, skeletal, and heart. ENO3 plays an important role in both glycogen and cholesterol metabolism. It has been demonstrated that ENO3 deficiency may lead to metabolic myopathies, and ENO3 speeds up hepatic cholesterol ester cumulation induced via the mediation of cholesteryl ester generation. Apart from these, ENO3 has also been involved in various tumors, though the results are contradictory. For example, ENO3 is up-regulated in STK11 mutant pulmonary carcinoma and colorectal carcinoma, while down-regulated in pancreatic cancer and hepatocellular carcinomas. ENO3 has 3 isoforms with the molecular mass of 42-47 kDa. (PMID: 33987359, 35004693)

Stockage

Stockage:
Stocker à -20°C. Stable pendant un an après l'expédition.

Tampon de stockage:
PBS avec azoture de sodium à 0,02 % et glycérol à 50 % pH 7,3
L'aliquotage n'est pas nécessaire pour le stockage à -20C

*** Les 20ul contiennent 0,1% de BSA.

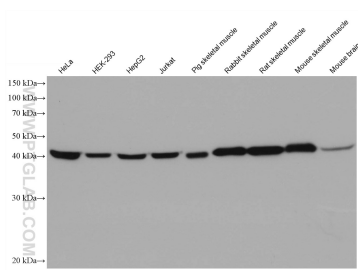
For technical support and original validation data for this product please contact:

T: 1 (888) 4PTGLAB (1-888-478-4522) (toll free in USA), or 1(312) 455-8498 (outside USA)

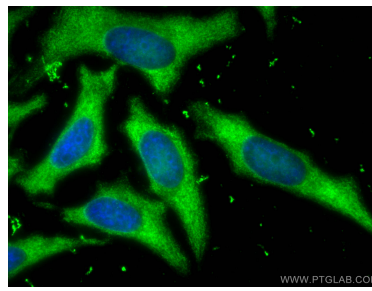
E: proteintech@ptglab.com
W: ptglab.com

This product is exclusively available under Proteintech Group brand and is not available to purchase from any other manufacturer.

Données de validation sélectionnées



Various lysates were subjected to SDS PAGE followed by western blot with 68147-1-Ig (ENO3 antibody) at dilution of 1:10000 incubated at room temperature for 1.5 hours.



Immunofluorescent analysis of (-20°C Ethanol) fixed HeLa cells using ENO3 antibody (68147-1-Ig, Clone: 2C12G3) at dilution of 1:800 and CoraLite®488-Conjugated AffiniPure Goat Anti-Mouse IgG(H+L).