

À des fins de recherche uniquement

Anticorps Monoclonal anti-FITC

Numéro de catalogue: 68132-1-Ig



Informations de base

Numéro de catalogue:

68132-1-Ig

Numéro d'acquisition GenBank:

Identification du gène (NCBI):

Méthode de purification:

Purification par protéine A

Taille:

150ul, Concentration: 1000 µg/ml by Nanodrop;

Nom complet:

CloneNo.:

3C10A1

Hôte:

Mouse

Dilutions recommandées:

WB 1:5000-1:50000

Isotype:

IgG2a

Applications

Applications testées:

WB, ELISA

Contrôles positifs:

WB : FITC-TDP43, FITC-Ag1231, BSA

Spécificité de l'espèce:

FITC

Informations générales

Fluorescein isothiocyanate (FITC) is a derivative of fluorescein used in wide-ranging applications. It is the original fluorescein molecule functionalized with an isothiocyanate reactive group (-N=C=S), replacing a hydrogen atom on the bottom ring of the structure. It is typically available as a mixture of isomers, fluorescein 5-isothiocyanate (5-FITC) and fluorescein 6-isothiocyanate (6-FITC). FITC is reactive towards nucleophiles including amine and sulfhydryl groups on proteins. CAS number of FITC: 27072-45-3 (mixture); 3326-32-7, 5-isomer; 18861-78-4 (6-isomer). This mouse monoclonal antibody detects the FITC only. This antibody can be coated in the plate to capture the FITC conjugated protein or antibody.

Stockage

Stockage:

Stocker à -20°C. Stable pendant un an après l'expédition.

Tampon de stockage:

PBS avec azoture de sodium à 0,02 % et glycérol à 50 % pH 7,3

L'aliquotage n'est pas nécessaire pour le stockage à -20C

*** Les 20ul contiennent 0,1% de BSA.

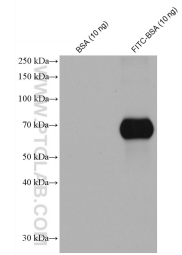
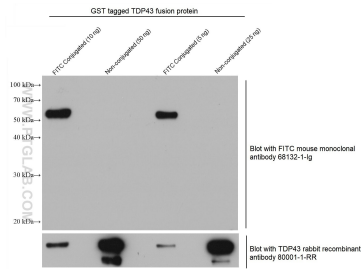
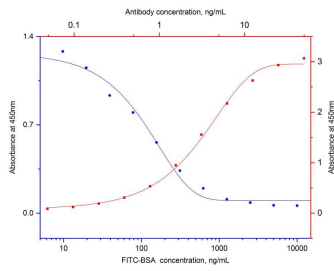
For technical support and original validation data for this product please contact:

T: 1 (888) 4PTGLAB (1-888-478-4522) (toll free in USA), or 1(312) 455-8498 (outside USA)

E: proteintech@ptglab.com
W: ptglab.com

This product is exclusively available under Proteintech Group brand and is not available to purchase from any other manufacturer.

Données de validation sélectionnées



Indirect ELISA and competitive ELISA results show that this antibody is specific to FITC. Indirect ELISA was performed by coating FITC conjugated BSA at 0ng/well followed by blocking with 1% BSA. Serial diluted primary antibody was added to the plates and incubated at 37°C. HRP-goat anti-mouse was used for detection (red curve, refer to top X-right Y axis). Competitive ELISA was performed similarly except that different concentration of FITC (active group) been



WB result of FITC antibody (68132-1-Ig; 1:40000; incubated at room temperature for 1.5 hours) with FITC conjugated protein and un-conjugated protein as negative control. Antibody to TDP-43 as the positive control to target protein.

WB results of FITC antibody (68132-1-Ig, 1:10000) with BSA and FITC conjugated BSA.