

À des fins de recherche uniquement

Anticorps Monoclonal anti-PRAME

Numéro de catalogue: 68097-1-Ig **Phare**



Informations de base

Numéro de catalogue: 68097-1-Ig	Numéro d'acquisition GenBank: BC014074	Méthode de purification: Purification par protéine A
Taille: 150ul , Concentration: 1000 µg/ml by Nanodrop;	Identification du gène (NCBI): 23532	CloneNo.: 1E9G9
Hôte: Mouse	Nom complet: preferentially expressed antigen in melanoma	Dilutions recommandées: WB 1:5000-1:50000 IF 1:400-1:1600
Isotype: IgG2b	MW calculé 509 aa, 58 kDa	
Immunogen Catalog Number: AG1906	MW observés: 50 kDa	

Applications

Applications testées:
IF, WB, ELISA

Spécificité de l'espèce:
Humain, rat, souris

Contrôles positifs:

WB : cellules A549, cellules A375, cellules HeLa, cellules K-562, cellules U2OS, tissu testiculaire de souris

IF : cellules HaCaT,

Informations générales

The PRAME (preferentially expressed antigen of melanoma) gene was previously shown to be overexpressed in ovarian/primary peritoneal serous carcinoma compared with malignant mesothelioma using gene expression arrays. It is considered a melanocyte differentiation antigen which is overexpressed in both solid and hematologic tumors. In normal tissue, a very low level of PRAME expression is found in normal testis, adrenals, ovary and endometrium. A high level of PRAME expression has been reported for several solid tumors, including ovarian cancer, breast cancer, lung cancer and melanomas, medulloblastoma, sarcomas, head and neck cancers, neuroblastoma, renal cancer, and Wilms'tumor. As a nuclear transcriptional repressor protein, PRAME binds to retinoic acid receptor α , thereby inhibiting retinoic acid induced differentiation, growth arrest, and apoptosis.

Stockage

Stockage:

Stocker à -20°C. Stable pendant un an après l'expédition.

Tampon de stockage:

PBS avec azoture de sodium à 0,02 % et glycérol à 50 % pH 7,3

L'aliquotage n'est pas nécessaire pour le stockage à -20C

***** Les 20ul contiennent 0,1% de BSA.**

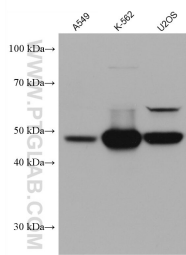
For technical support and original validation data for this product please contact:

T: 1 (888) 4PTGLAB (1-888-478-4522) (toll free in USA), or 1(312) 455-8498 (outside USA)

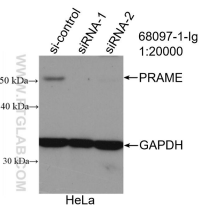
E: proteintech@ptglab.com
W: ptglab.com

This product is exclusively available under Proteintech Group brand and is not available to purchase from any other manufacturer.

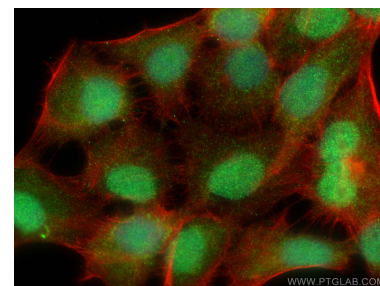
Données de validation sélectionnées



Various lysates were subjected to SDS PAGE followed by western blot with 68097-1-Ig (PRAME antibody) at dilution of 1:10000 incubated at room temperature for 1.5 hours.



WB result of PRAME antibody (68097-1-Ig; 1:20000; incubated at room temperature for 1.5 hours) with sh-Control and sh-PRAME transfected HeLa cells.



Immunofluorescent analysis of (4% PFA) fixed HaCaT cells using PRAME antibody (68097-1-Ig, Clone: 1E9G9) at dilution of 1:800 and CoraLite®488-Conjugated AffiniPure Goat Anti-Mouse IgG(H+L), CL594-phalloidin (red).