

À des fins de recherche uniquement

Anticorps Monoclonal anti-HSPB11

Numéro de catalogue: 68059-1-Ig



Informations de base

Numéro de catalogue: 68059-1-Ig	Numéro d'acquisition GenBank: BC005245	Méthode de purification: Purification par protéine A
Taille: 150ul, Concentration: 1000 µg/ml by Nanodrop;	Identification du gène (NCBI): 51668	CloneNo.: 2D11B3
Hôte: Mouse	Nom complet: heat shock protein family B (small), member 11	Dilutions recommandées: WB 1:5000-1:50000
Isotype: IgG2a	MW calculé 144 aa, 16 kDa	
Immunogen Catalog Number: AG8804	MW observés: 20 kDa	

Applications

Applications testées:
WB, ELISA
Spécificité de l'espèce:
Humain

Contrôles positifs:
WB : cellules NCCIT, cellules HEK-293, cellules HeLa,
cellules Jurkat, cellules K-562, cellules LNCaP, cellules
T-47D

Informations générales

HSPB11 (Heat shock protein beta-11), also known as IFT25, was originally identified as a small heat shock protein. Recently it has been identified as a component of IFT complex B. It has been demonstrated that IFT25 is not required for ciliary assembly but is required for proper Hedgehog signaling, which in mammals occurs within cilia. Cilia lacking IFT25 have defects in the signal-dependent transport of multiple Hedgehog components and fail to activate the pathway upon stimulation.

Stockage

Stockage:
Stocker à -20 °C.
Tampon de stockage:
PBS avec azoture de sodium à 0,02 % et glycérol à 50 % pH 7,3
L'aliquotage n'est pas nécessaire pour le stockage à -20C

*** Les 20ul contiennent 0,1% de BSA.

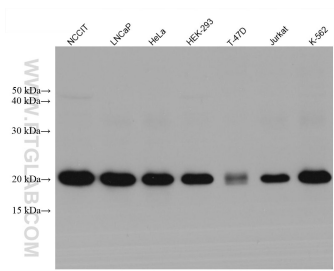
For technical support and original validation data for this product please contact:

T: 1 (888) 4PTGLAB (1-888-478-4522) (toll free
in USA), or 1(312) 455-8498 (outside USA)

E: proteintech@ptglab.com
W: ptglab.com

This product is exclusively available under Proteintech Group brand and is not available to purchase from any other manufacturer.

Données de validation sélectionnées



Various lysates were subjected to SDS PAGE followed by western blot with 68059-1-Ig (HSPB11 antibody) at dilution of 1:10000 incubated at room temperature for 1.5 hours.