

À des fins de recherche uniquement

Anticorps Monoclonal anti-ZFP36L1

Numéro de catalogue: 68038-1-Ig



Informations de base

Numéro de catalogue: 68038-1-Ig	Numéro d'acquisition GenBank: BC018340	Méthode de purification: Purification par protéine A
Taille: 150ul , Concentration: 1000 µg/ml by Nanodrop;	Identification du gène (NCBI): 677	CloneNo.: 1H6G6
Hôte: Mouse	Nom complet: zinc finger protein 36, C3H type-like 1	Dilutions recommandées: 1WB 1:1000-1:6000
Isotype: IgG2b	MW calculé: 338 aa, 36 kDa	
Immunogen Catalog Number: AG30469	MW observés: 36 kDa	

Applications

Applications testées:
WB, ELISA
Spécificité de l'espèce:
Humain, rat

Contrôles positifs:

WB : cellules HUVEC, cellules A549, cellules HeLa,
cellules HSC-T6, cellules PC-12, cellules U2OS

Informations générales

As a member of the Tristetraprolin (TTP) RNA binding protein family, ZFP36L1 regulate gene expression post-transcriptionally by promoting mRNA decay. In mammals, ZFP36L1 and its family members have been shown to regulate development, cell differentiation, cell cycle, apoptosis and anti-cancer capability by targeting an extensive overlapping repertoire of mRNAs.

Stockage

Stockage:
Stocker à -20°C. Stable pendant un an après l'expédition.
Tampon de stockage:
PBS avec azoture de sodium à 0,02 % et glycérol à 50 % pH 7,3
L'aliquotage n'est pas nécessaire pour le stockage à -20C

*** Les 20ul contiennent 0,1% de BSA.

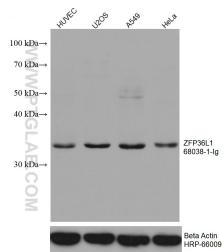
For technical support and original validation data for this product please contact:

T: 1 (888) 4PTGLAB (1-888-478-4522) (toll free
in USA), or 1(312) 455-8498 (outside USA)

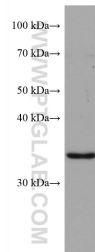
E: proteintech@ptglab.com
W: ptglab.com

This product is exclusively available under Proteintech Group brand and is not available to purchase from any other manufacturer.

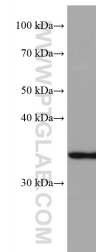
Données de validation sélectionnées



Various lysates were subjected to SDS PAGE followed by western blot with 68038-1-Ig (ZFP36L1 antibody) at dilution of 1:3000 incubated at room temperature for 1.5 hours. The membrane was stripped and reblotted with HRP-conjugated Beta Actin Monoclonal antibody (HRP-66009) as loading control.



HSC-T6 cells were subjected to SDS PAGE followed by western blot with 68038-1-Ig (ZFP36L1 antibody) at dilution of 1:3000 incubated at room temperature for 1.5 hours.



PC-12 cells were subjected to SDS PAGE followed by western blot with 68038-1-Ig (ZFP36L1 antibody) at dilution of 1:3000 incubated at room temperature for 1.5 hours.