

À des fins de recherche uniquement

Anticorps Monoclonal anti-ALDH3A1

Numéro de catalogue: 68036-1-Ig Phare



Informations de base

Numéro de catalogue: 68036-1-Ig	Numéro d'acquisition GenBank: BC004370	Méthode de purification: Purification par protéine G
Taille: 150ul , Concentration: 1000 µg/ml by Nanodrop;	Identification du gène (NCBI): 218	CloneNo.: 1D4G7
Hôte: Mouse	Nom complet: aldehyde dehydrogenase 3 family, memberA1	Dilutions recommandées: WB 1:5000-1:50000 IHC 1:1000-1:4000 IF 1:200-1:800
Isotype: IgG1	MW calculé: 50 kDa	
Immunogen Catalog Number: AG8125	MW observés: 50 kDa	

Applications

Applications testées:

IF, IHC, WB, ELISA

Spécificité de l'espèce:

Humain

Remarque-IHC: il est suggéré de démasquer l'antigène avec un tampon de TE buffer pH 9,0; (*) À défaut, 'le démasquage de l'antigène peut être effectué avec un tampon citrate pH 6,0.

Contrôles positifs:

WB : cellules A549, cellules HeLa, cellules LNCaP

IHC : tissu rénal humain,

IF : cellules HEK-293,

Informations générales

ALDH3A1(Aldehyde dehydrogenase, dimeric NADP-preferring), also named as ALDH3, is a member of the ALDH superfamily, which consists of NAD(P)+-dependent enzymes that catalyse the oxidation of a wide variety of endogenously produced and exogenous aldehydes to their corresponding acids. It is expressed at high concentrations in the mammalian cornea and it is believed that it protects this vital tissue and the rest of the eye against UVlight-induced damage.(PMID:12943535). It can exist as a dimer(PMID:16919242).

Stockage

Stockage:

Stocker à -20°C. Stable pendant un an après l'expédition.

Tampon de stockage:

PBS avec azoture de sodium à 0,02 % et glycérol à 50 % pH 7,3

L'aliquotage n'est pas nécessaire pour le stockage à -20C

*** Les 20ul contiennent 0,1% de BSA.

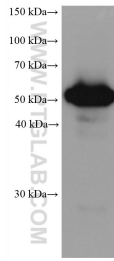
For technical support and original validation data for this product please contact:

T: 1 (888) 4PTGLAB (1-888-478-4522) (toll free
in USA), or 1(312) 455-8498 (outside USA)

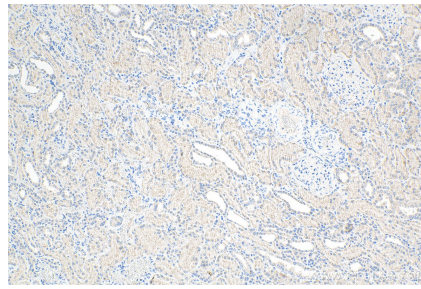
E: proteintech@ptglab.com
W: ptglab.com

This product is exclusively available under Proteintech Group brand and is not available to purchase from any other manufacturer.

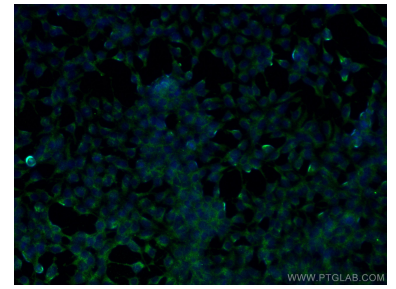
Données de validation sélectionnées



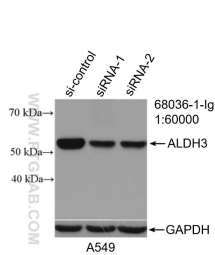
A549 cells were subjected to SDS PAGE followed by western blot with 68036-1-Ig (ALDH3A1 antibody) at dilution of 1:20000 incubated at room temperature for 1.5 hours.



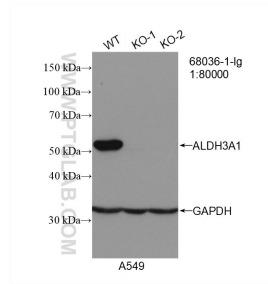
Immunohistochemical analysis of paraffin-embedded human kidney tissue slide using 68036-1-Ig (ALDH3A1 antibody) at dilution of 1:2000 (under 10x Lens). Heat mediated antigen retrieval with Tris-EDTA buffer (pH 9.0).



Immunofluorescent analysis of (-20°C Ethanol) fixed HEK-293 cells using ALDH3A1 antibody (68036-1-Ig, Clone: 1D4G7) at dilution of 1:400 and CoraLite®488-Conjugated AffiniPure Goat Anti-Mouse IgG(H+L).



WB result of ALDH3A1 antibody (68036-1-Ig; 1:60000; incubated at room temperature for 1.5 hours) with sh-Control and sh-ALDH3A1 transfected A549 cells.



WB result of ALDH3A1 antibody (68036-1-Ig; 1:80000; room temperature for 1.5 hours) with wild-type and ALDH3A1 knockout A549 cells.