

À des fins de recherche uniquement

Anticorps Monoclonal anti-CR1

Numéro de catalogue: 68033-1-Ig



Informations de base

Numéro de catalogue: 68033-1-Ig	Numéro d'acquisition GenBank: NM_000573	Méthode de purification: Purification par protéine G
Taille: 150ul, Concentration: 1000 µg/ml by Nanodrop and 549 µg/ml by Bradford method using BSA as the standard;	Identification du gène (NCBI): 1378	CloneNo.: 1B8E6
Hôte: Mouse	Nom complet: complement component (3b/4b) receptor 1 (Knops blood group)	Dilutions recommandées: IHC 1:550-1:2200 IF 1:200-1:800
Isotype: IgG1	MW calculé 224 kDa	
Immunogen Catalog Number: AG30268		

Applications

Applications testées: IF, IHC, ELISA	Contrôles positifs: IHC : tissu d'amygdalite humain, IF : tissu d'appendicite humain,
Spécificité de l'espèce: Humain	

Remarque-IHC: il est suggéré de démasquer l'antigène avec un tampon de TE buffer pH 9.0; (*) À défaut, le démasquage de l'antigène peut être effectué avec un tampon citrate pH 6,0.

Informations générales

Complement receptor type 1 (CR1), also known as C3b/C4b receptor or CD35, is a single-chain glycoprotein consisting of 30 repeating homologous protein domains known as short consensus repeats (~60 amino acids each) followed by transmembrane and cytoplasmic domains (PMID: 8765013). CR1 is variably expressed by granulocytes, monocytes, B cells, some T cells, erythrocytes, follicular dendritic cells, Langerhan cells and glomerular podocytes (PMID: 19004497). CR1 acts as a receptor for C3b and C4b and plays important roles in regulation of the complement cascade and clearance of immune complexes. A soluble form of CR1 (sCR1) has been found in plasma (PMID: 3156931). It has been reported that sCR1 is produced by a proteolytic cleavage in the C-terminal region of CR1 transmembrane domain (PMID: 9405292).

Stockage

Stockage:
Stocker à -20°C. Stable pendant un an après l'expédition.
Tampon de stockage:
PBS avec azoture de sodium à 0,02 % et glycérol à 50 % pH 7,3
L'aliquotage n'est pas nécessaire pour le stockage à -20C

*** Les 20ul contiennent 0,1% de BSA.

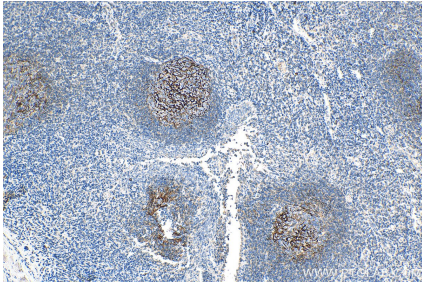
For technical support and original validation data for this product please contact:

T: 1 (888) 4PTGLAB (1-888-478-4522) (toll free
in USA), or 1(312) 455-8498 (outside USA)

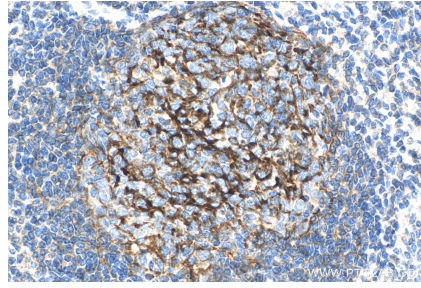
E: proteintech@ptglab.com
W: ptglab.com

This product is exclusively available under Proteintech Group brand and is not available to purchase from any other manufacturer.

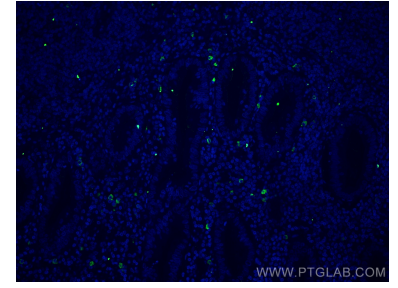
Données de validation sélectionnées



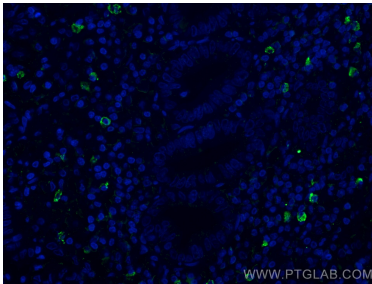
Immunohistochemical analysis of paraffin-embedded human tonsillitis tissue slide using 68033-1-Ig (CR1 antibody) at dilution of 1:1100 (under 10x lens). Heat mediated antigen retrieval with Tris-EDTA buffer (pH 9.0).



Immunohistochemical analysis of paraffin-embedded human tonsillitis tissue slide using 68033-1-Ig (CR1 antibody) at dilution of 1:1100 (under 40x lens). Heat mediated antigen retrieval with Tris-EDTA buffer (pH 9.0).



Immunofluorescent analysis of (4% PFA) fixed human appendicitis tissue using CR1 antibody (68033-1-Ig, Clone: 1B8E6) at dilution of 1:400 and CoraLite®488-Conjugated AffiniPure Goat Anti-Mouse IgG(H+L).



Immunofluorescent analysis of (4% PFA) fixed human tonsillitis tissue using CR1 antibody (68033-1-Ig, Clone: 1B8E6) at dilution of 1:400 and CoraLite®488-Conjugated AffiniPure Goat Anti-Mouse IgG(H+L).