

À des fins de recherche uniquement

Anticorps Monoclonal anti-RAB39B

Numéro de catalogue: 68014-1-Ig



Informations de base

Numéro de catalogue:	68014-1-Ig	Numéro d'acquisition GenBank:	BC009714	Méthode de purification:	Purification par protéine A
Taille:	150ul, Concentration: 1000 µg/ml by Nanodrop;	Identification du gène (NCBI):	116442	CloneNo.:	2F4F7
Hôte:	Mouse	Nom complet:	RAB39B, member RAS oncogene family	Dilutions recommandées:	WB 1:5000-1:50000
Isotype:	IgG2b	MW calculé	213 aa, 25 kDa		
Immunogen Catalog Number:	AG27170	MW observés:	25 kDa		

Applications

Applications testées:
WB, ELISA

Spécificité de l'espèce:
Humain, Lapin, porc, rat, souris

Contrôles positifs:
WB : tissu cérébral de lapin, cellules Jurkat, cellules LNCaP, tissu cérébral de porc, tissu cérébral de souris, tissu de cervelet de porc, tissu de cervelet de souris

Informations générales

RAB39B is a member of the RAB GTPase family with a putative role in vesicle trafficking. RAB39B is predominantly expressed in neuronal cells and is localized to the endoplasmic reticulum, Golgi and trans-Golgi recycling endosomes. Several reports suggested that RAB39B may regulate protein trafficking and the PI3K-AKT-mTOR pathway. Mutations in RAB39B are known to be associated with X-linked intellectual disability (XLID), Parkinson's disease, and autism.

Stockage

Stockage:
Stocker à -20 °C.

Tampon de stockage:
PBS avec azoture de sodium à 0,02 % et glycérol à 50 % pH 7,3
L'aliquotage n'est pas nécessaire pour le stockage à -20C

***** Les 20ul contiennent 0,1% de BSA.**

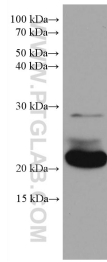
For technical support and original validation data for this product please contact:

T: 1 (888) 4PTGLAB (1-888-478-4522) (toll free in USA), or 1(312) 455-8498 (outside USA)

E: proteintech@ptglab.com
W: ptglab.com

This product is exclusively available under Proteintech Group brand and is not available to purchase from any other manufacturer.

Données de validation sélectionnées



rabbit brain tissue were subjected to SDS PAGE followed by western blot with 68014-1-Ig (RAB39B antibody) at dilution of 1:20000 incubated at room temperature for 1.5 hours.