

À des fins de recherche uniquement

Anticorps Monoclonal anti-Phospho-S6 Ribosomal protein (Ser235)



Numéro de catalogue: 67898-1-Ig **2 Publications**

Informations de base

Numéro de catalogue: 67898-1-Ig	Numéro d'acquisition GenBank: BC000524	Méthode de purification: Purification par protéine A
Taille: 100ul, Concentration: 500 µg/ml by Nanodrop;	Identification du gène (NCBI): 6194	CloneNo.: 2A4B6
Hôte: Mouse	Nom complet: ribosomal protein S6	Dilutions recommandées: WB 1:5000-1:50000
Isotype: IgG2b	MW calculé: 29 kDa	
	MW observés: 32 kDa	

Applications

Applications testées:

WB, ELISA

Demandes citées:

WB

Spécificité de l'espèce:

Humain, rat, souris

Espèces citées:

Humain

Contrôles positifs:

WB : cellules HeLa, cellules HEK-293, cellules HEK-293 traitées à la calyculine A, cellules HeLa traitées à la calyculine A, cellules MCF-7 traitées à l'IGF-1, cellules NIH/3T3 traitées à la calyculine A

Informations générales

Ribosomal protein S6 (RPS6) is one of the components of the 40S ribosomal subunit. RPS6 has been functionally regarded as the stimulator and/or inhibitor of certain types of mRNA translation, as well as the regulator of cellular metabolisms, cells size, survival and proliferation. RPS6 is phosphorylated at multiple sites, comprised between Ser235 and Ser247, by the p70 rps6 kinase (S6K) 1, which is a major downstream effector of the mammalian target of rapamycin complex 1 (mTORC1). Phosphorylation of RPS6 at the dual site Ser235/236 occurs also independently of mTORC1, via the p90 ribosomal S6 kinases (RSK), which are activated by the extracellular signal-regulated kinases (ERK). Recent studies performed in pancreatic β -cells identified PKA as an additional RPS6 kinase, specifically involved in the phosphorylation of Ser235/236. (PMID: 26490682, PMID: 21814187, PMID: 31112404). 67898-1-Ig specifically recognizes the phosphorylation site of Ser235 or dual site Ser235/236.

Publications notables

Autrice	Pubmed ID	Journal	Application
Yu Tao	31908053	FASEBJ	WB
Evangelia Lekka	36572670	Nat Commun	WB

Stockage

Stockage:

Stocker à -20°C. Stable pendant un an après l'expédition.

Tampon de stockage:

PBS avec azoture de sodium à 0,02 % et glycérol à 50 % pH 7,3

L'aliquotage n'est pas nécessaire pour le stockage à -20C

***** Les 20ul contiennent 0,1% de BSA.**

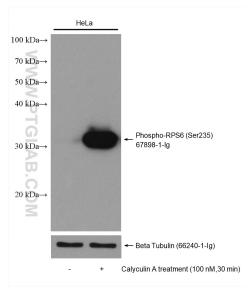
For technical support and original validation data for this product please contact:

T: 1 (888) 4PTGLAB (1-888-478-4522) (toll free in USA), or 1(312) 455-8498 (outside USA)

E: proteintech@ptglab.com
W: ptglab.com

This product is exclusively available under Proteintech Group brand and is not available to purchase from any other manufacturer.

Données de validation sélectionnées



Non-treated and Calyculin A treated HeLa cells were subjected to SDS PAGE followed by western blot with 67898-1-Ig (Phospho-S6 Ribosomal protein (Ser235) antibody) at dilution of 1:20000 incubated at room temperature for 1.5 hours. The membrane was stripped and re-blotted with beta tubulin antibody as loading control.