

À des fins de recherche uniquement

Anticorps Monoclonal anti-RUVBL2

Numéro de catalogue: 67851-1-Ig



Informations de base

Numéro de catalogue:	67851-1-Ig	Numéro d'acquisition GenBank:	BC000428	Méthode de purification:	Purification par protéine A
Taille:	150ul, Concentration: 1000 µg/ml by Nanodrop;	Identification du gène (NCBI):	10856	CloneNo.:	1A1A4
Hôte:	Mouse	Nom complet:	RuvB-like 2 (E. coli)	Dilutions recommandées:	WB 1:5000-1:50000 IHC 1:500-1:2000 IF 1:200-1:800
Isotype:	IgG2b	MW calculé:	51 kDa		
Immunogen Catalog Number:	AG0253	MW observés:	51 kDa		

Applications

Applications testées:

IF, IHC, WB, ELISA

Spécificité de l'espèce:

Humain, rat, souris

Remarque-IHC: il est suggéré de démasquer l'antigène avec un tampon de TE buffer pH 9,0; (*) À défaut, 'le démasquage de l'antigène peut être effectué avec un tampon citrate pH 6,0.

Contrôles positifs:

WB : cellules A549, cellules A431, cellules HeLa, cellules HSC-T6, cellules Jurkat, cellules K-562, cellules Neuro-2a, cellules NIH/3T3, cellules PC-12

IHC : tissu de cancer du poumon humain,

IF : cellules HeLa,

Informations générales

RUVBL2 belongs to the conserved ATPases associated with various cellular activities (AAA+) protein subfamily, which is characterized by the presence of conserved Walker A and B motifs that are involved in ATP binding and hydrolysis. The AAA+ (ATPases associated with diverse cellular activities) ATPases, RUVBL1 and RUVBL2, were originally isolated as components of transcriptional complexes and shown to function in a number of different cellular processes, including transcriptional regulation, chromatin remodelling and DNA damage responses. (PMID: 31572066, PMID: 31138842)

Stockage

Stockage:

Stocker à -20°C. Stable pendant un an après l'expédition.

Tampon de stockage:

PBS avec azoture de sodium à 0,02 % et glycérol à 50 % pH 7,3

L'aliquotage n'est pas nécessaire pour le stockage à -20C

*** Les 20ul contiennent 0,1% de BSA.

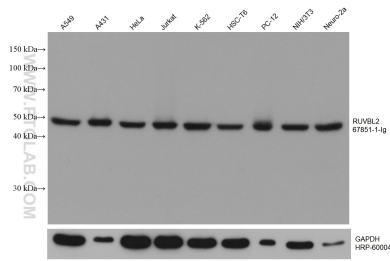
For technical support and original validation data for this product please contact:

T: 1 (888) 4PTGLAB (1-888-478-4522) (toll free in USA), or 1(312) 455-8498 (outside USA)

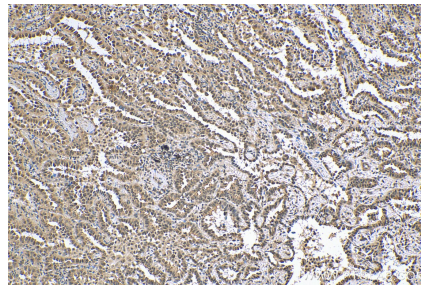
E: proteintech@ptglab.com
W: ptglab.com

This product is exclusively available under Proteintech Group brand and is not available to purchase from any other manufacturer.

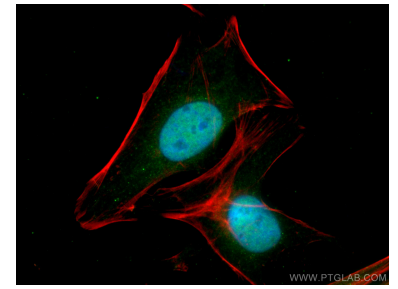
Données de validation sélectionnées



A549 cells were subjected to SDS PAGE followed by western blot with 67851-1-ig (RUVBL2 antibody) at dilution of 1:10000 incubated at room temperature for 1.5 hours. The membrane was stripped and reblotted with HRP-conjugated GAPDH Monoclonal antibody (HRP-60004) as loading control.



Immunohistochemical analysis of paraffin-embedded human lung cancer tissue slide using 67851-1-ig (RUVBL2 antibody) at dilution of 1:1000 (under 10x lens). Heat mediated antigen retrieval with Tris-EDTA buffer (pH 9.0).



Immunofluorescent analysis of (4% PFA) fixed HeLa cells using RUVBL2 antibody (67851-1-ig, Clone: 1A1A4) at dilution of 1:400 and CoraLite®488-Conjugated AffiniPure Goat Anti-Mouse IgG(H+L), CL594-Phalloidin (red).