

À des fins de recherche uniquement

# Anticorps Monoclonal anti-PSMA7

Numéro de catalogue: 67817-1-Ig Phare



## Informations de base

Numéro de catalogue: 67817-1-Ig	Numéro d'acquisition GenBank: BC004427	Méthode de purification: Purification par protéine G
Taille: 150ul, Concentration: 1000 µg/ml by Nanodrop and 475 µg/ml by Bradford method using BSA as the standard;	Identification du gène (NCBI): 5688	CloneNo.: 1F2C6
Hôte: Mouse	Nom complet: proteasome (prosome, macropain) subunit, alpha type, 7	Dilutions recommandées: WB 1:5000-1:50000 IHC 1:1000-1:4000 IF 1:200-1:800
Isotype: IgG1	MW calculé 28 kDa	
Immunogen Catalog Number: AG7821	MW observés: 28-30 kDa	

## Applications

### Applications testées:

IF, IHC, WB, ELISA

### Spécificité de l'espèce:

Humain, rat, souris

**Remarque-IHC: il est suggéré de démasquer l'antigène avec un tampon de TE buffer pH 9.0; (\*) À défaut, le démasquage de l'antigène peut être effectué avec un tampon citrate pH 6,0.**

### Contrôles positifs:

WB : cellules LNCaP, cellules 4T1, cellules HEK-293, cellules HeLa, cellules HSC-T6, cellules Jurkat, cellules K-562, cellules MCF-7, cellules NIH/3T3, cellules PC-12

IHC : tissu de cancer du col de l'utérus humain,

IF : cellules HeLa,

## Informations générales

PSMA7 (Proteasome subunit alpha type-7) is also named HSPC and belongs to the peptidase T1A family. It is an  $\alpha$ -type subunit of the 20S proteasome core complex and participates in degrading proteins through the ubiquitin-proteasome pathway (UPP) which plays an important role in the regulation of cell proliferation or cell cycle control, transcriptional regulation, immune and stress response, cell differentiation, and apoptosis (PMID: 19442227).

## Stockage

### Stockage:

Stocker à -20°C. Stable pendant un an après l'expédition.

### Tampon de stockage:

PBS avec azote de sodium à 0,02 % et glycérol à 50 % pH 7,3

L'aliquotage n'est pas nécessaire pour le stockage à -20C

\*\*\* Les 20ul contiennent 0,1% de BSA.

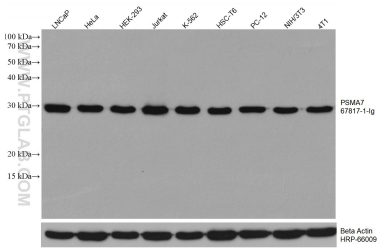
For technical support and original validation data for this product please contact:

T: 1 (888) 4PTGLAB (1-888-478-4522) (toll free in USA), or 1(312) 455-8498 (outside USA)

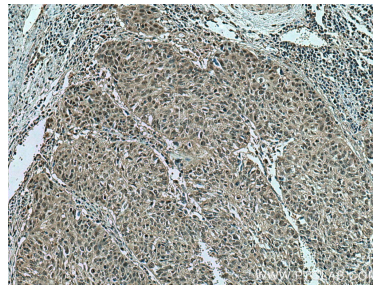
E: proteintech@ptglab.com  
W: ptglab.com

This product is exclusively available under Proteintech Group brand and is not available to purchase from any other manufacturer.

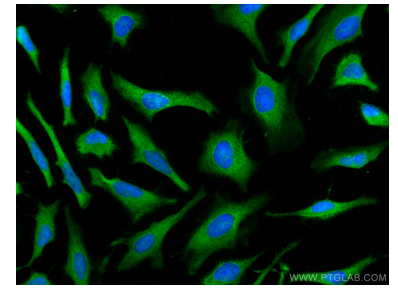
## Données de validation sélectionnées



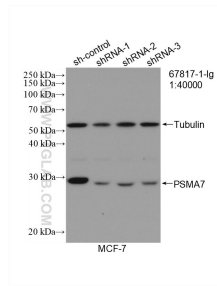
Various lysates were subjected to SDS PAGE followed by western blot with 67817-1-Ig (PSMA7 antibody) at dilution of 1:20000 incubated at room temperature for 1.5 hours. The membrane was stripped and reblotted with HRP-conjugated Beta Actin Monoclonal antibody (HRP-66009) as loading control.



Immunohistochemical analysis of paraffin-embedded human cervical cancer tissue slide using 67817-1-Ig (PSMA7 antibody) at dilution of 1:2000 (under 10x lens). Heat mediated antigen retrieval with Tris-EDTA buffer (pH 9.0).



Immunofluorescent analysis of (-20°C Methanol) fixed HeLa cells using PSMA7 antibody (67817-1-Ig, Clone: 1F2C6) at dilution of 1:400 and CoraLite®488-Conjugated AffiniPure Goat Anti-Mouse IgG(H+L).



WB result of PSMA7 antibody (67817-1-Ig; 1:40000; incubated at room temperature for 1.5 hours) with sh-Control and sh-PSMA7 transfected MCF-7 cells.