

À des fins de recherche uniquement

Anticorps Monoclonal anti-SLC22A7

Numéro de catalogue: 67479-1-Ig



Informations de base

Numéro de catalogue: 67479-1-Ig	Numéro d'acquisition GenBank: BC033805	Méthode de purification: Purification par protéine A
Taille: 150ul, Concentration: 1700 µg/ml by Nanodrop and 1000 µg/ml by Bradford method using BSA as the standard;	Identification du gène (NCBI): 10864	CloneNo.: 3D3C3
Hôte: Mouse	Nom complet: solute carrier family 22 (organic anion transporter), member 7	Dilutions recommandées: WB 1:1000-1:3000 IHC 1:1000-1:4000 IF 1:200-1:800
Isotype: IgG2a	MW calculé 60 kDa	
Immunogen Catalog Number: AG25234	MW observés: 60 kDa	

Applications

Applications testées:
IF, IHC, WB, ELISA

Spécificité de l'espèce:
Humain

Remarque-IHC: il est suggéré de démasquer l'antigène avec un tampon de TE buffer pH 9.0; (*) À défaut, le démasquage de l'antigène peut être effectué avec un tampon citrate pH 6,0.

Contrôles positifs:

WB : cellules SMMC-7721,

IHC : tissu hépatique humain, tissu de cancer du foie humain, tissu hépatique de souris

IF : cellules HEK-293,

Informations générales

Stockage

Stockage:
Stocker à -20 °C.
Tampon de stockage:
PBS avec azoture de sodium à 0,02 % et glycérol à 50 % pH 7,3
L'aliquotage n'est pas nécessaire pour le stockage à -20C

*** Les 20ul contiennent 0,1% de BSA.

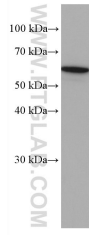
For technical support and original validation data for this product please contact:

T: 1 (888) 4PTGLAB (1-888-478-4522) (toll free
in USA), or 1(312) 455-8498 (outside USA)

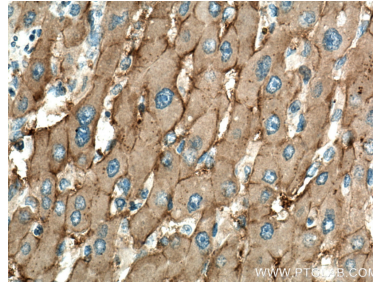
E: proteintech@ptglab.com
W: ptglab.com

This product is exclusively available under Proteintech Group brand and is not available to purchase from any other manufacturer.

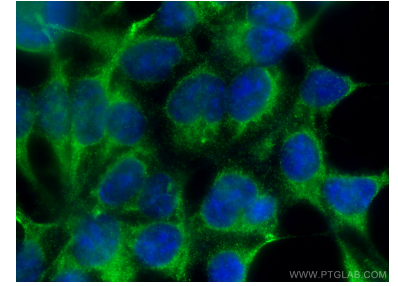
Données de validation sélectionnées



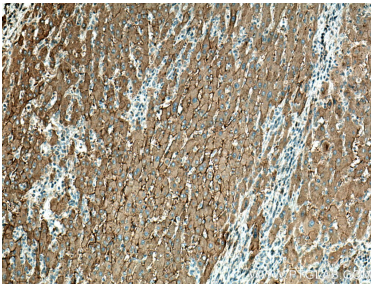
SMMC-7721 cells were subjected to SDS PAGE followed by western blot with 67479-1-Ig (SLC22A7 antibody) at dilution of 1:2000 incubated at room temperature for 1.5 hours.



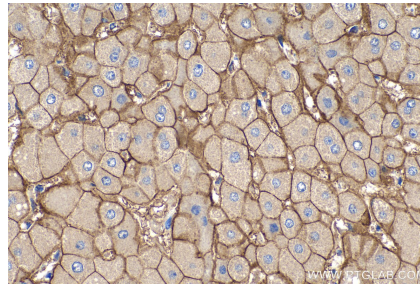
Immunohistochemical analysis of paraffin-embedded human liver cancer tissue slide using 67479-1-Ig (SLC22A7 antibody) at dilution of 1:500 (under 40x lens). Heat mediated antigen retrieval with Tris-EDTA buffer (pH 9.0).



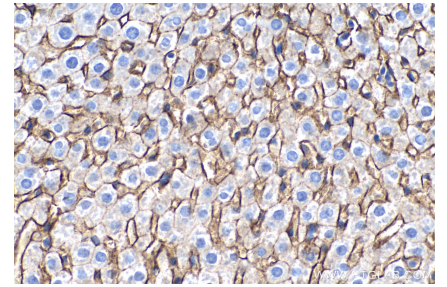
Immunofluorescent analysis of (-20°C Ethanol) fixed HEK-293 cells using SLC22A7 antibody (67479-1-Ig, Clone: 3D3C3) at dilution of 1:400 and CoraLite®488-Conjugated AffiniPure Goat Anti-Mouse IgG(H+L).



Immunohistochemical analysis of paraffin-embedded human liver cancer tissue slide using 67479-1-Ig (SLC22A7 antibody) at dilution of 1:500 (under 10x lens). Heat mediated antigen retrieval with Tris-EDTA buffer (pH 9.0).



Immunohistochemical analysis of paraffin-embedded human liver tissue slide using 67479-1-Ig (SLC22A7 antibody) at dilution of 1:2000 (under 40x lens). Heat mediated antigen retrieval with Tris-EDTA buffer (pH 9.0).



Immunohistochemical analysis of paraffin-embedded mouse liver tissue slide using 67479-1-Ig (SLC22A7 antibody) at dilution of 1:2000 (under 40x lens). Heat mediated antigen retrieval with Tris-EDTA buffer (pH 9.0).